

TMEM30B Antibody

Catalog No: #34185

Package Size: #34185-1 50ul #34185-2 100ul

Orders: order@signalwayantibody.com

Support: tech@signalwayantibody.com

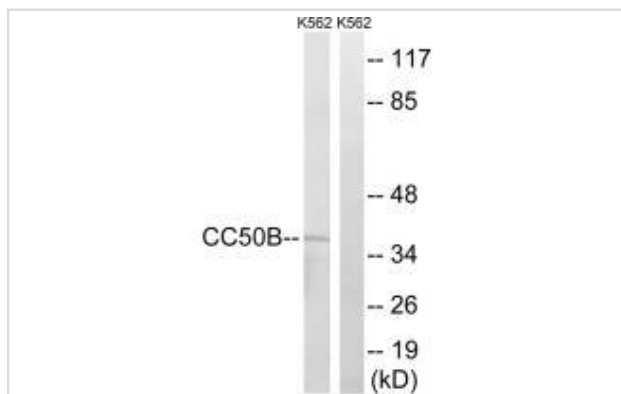
Description

Product Name	TMEM30B Antibody
Host Species	Rabbit
Clonality	Polyclonal
Purification	The antibody was affinity-purified from rabbit antiserum by affinity-chromatography using epitope-specific immunogen.
Applications	WB
Species Reactivity	Hu
Specificity	The antibody detects endogenous levels of total TMEM30B protein.
Immunogen Type	Peptide
Immunogen Description	Synthesized peptide derived from internal of human TMEM30B.
Target Name	TMEM30B
Other Names	Cell cycle control protein 50B; Transmembrane protein 30B; TMEM30B; CDC50B; CC50B
Accession No.	Swiss-Prot: Q3MIR4NCBI Gene ID: 161291
SDS-PAGE MW	38kd
Concentration	1.0mg/ml
Formulation	Rabbit IgG in phosphate buffered saline (without Mg ²⁺ and Ca ²⁺), pH 7.4, 150mM NaCl, 0.02% sodium azide and 50% glycerol.
Storage	Store at -20°C

Application Details

Western blotting: 1:500~1:3000

Images



Western blot analysis of extracts from K562 cells, using TMEM30B antibody #34185.

Background

Accessory component of a P4-ATPase flippase complex which catalyzes the hydrolysis of ATP coupled to the transport of aminophospholipids from

the outer to the inner leaflet of various membranes and ensures the maintenance of asymmetric distribution of phospholipids. Phospholipid translocation seems also to be implicated in vesicle formation and in uptake of lipid signaling molecules. The beta subunit may assist in binding of the phospholipid substrate. Probable. Can mediate the export of alpha subunits ATP8A1, ATP8B1, ATP8B2 and ATP8B4 from the ER to the plasma membrane.

The MGC Project Team, *Genome Res.* 14:2121-2127(2004).

Kato Y., *Oncol. Rep.* 12:939-943(2004).

Note: This product is for in vitro research use only and is not intended for use in humans or animals.