

MRPS9 Antibody

Catalog No: #34312

Package Size: #34312-1 50ul #34312-2 100ul

Orders: order@signalwayantibody.comSupport: tech@signalwayantibody.com

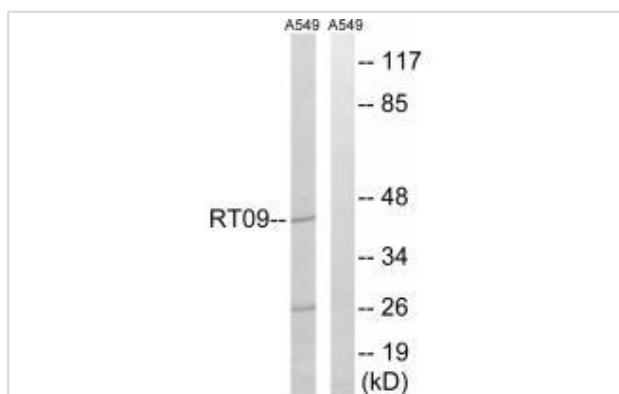
Description

Product Name	MRPS9 Antibody
Host Species	Rabbit
Clonality	Polyclonal
Purification	The antibody was affinity-purified from rabbit antiserum by affinity-chromatography using epitope-specific immunogen.
Applications	WB
Species Reactivity	Hu
Specificity	The antibody detects endogenous levels of total MRPS9 protein.
Immunogen Type	Peptide
Immunogen Description	Synthesized peptide derived from internal of human MRPS9.
Target Name	MRPS9
Other Names	28S ribosomal protein S9; mitochondrial; MRP-S9; RPMS9; RT09
Accession No.	Swiss-Prot: P82933NCBI Gene ID: 64965
SDS-PAGE MW	40kd
Concentration	1.0mg/ml
Formulation	Rabbit IgG in phosphate buffered saline (without Mg ²⁺ and Ca ²⁺), pH 7.4, 150mM NaCl, 0.02% sodium azide and 50% glycerol.
Storage	Store at -20°C

Application Details

Western blotting: 1:500~1:3000

Images



Western blot analysis of extracts from A549 cells, using MRPS9 antibody #34312.

Background

Mammalian mitochondrial ribosomal proteins are encoded by nuclear genes and help in protein synthesis within the mitochondrion. Mitochondrial

ribosomes (mitoribosomes) consist of a small 28S subunit and a large 39S subunit. They have an estimated 75% protein to rRNA composition compared to prokaryotic ribosomes, where this ratio is reversed. Another difference between mammalian mitoribosomes and prokaryotic ribosomes is that the latter contain a 5S rRNA. Among different species, the proteins comprising the mitoribosome differ greatly in sequence, and sometimes in biochemical properties, which prevents easy recognition by sequence homology. This gene encodes a 28S subunit protein.

The MGC Project Team; *Genome Res.* 14:2121-2127(2004).

Koc E.C., *J. Biol. Chem.* 276:19363-19374(2001).

Note: This product is for in vitro research use only and is not intended for use in humans or animals.