

## RPL36 Antibody

Catalog No: #34358

Package Size: #34358-1 50ul #34358-2 100ul

Orders: [order@signalwayantibody.com](mailto:order@signalwayantibody.com)Support: [tech@signalwayantibody.com](mailto:tech@signalwayantibody.com)

## Description

Product Name	RPL36 Antibody
Host Species	Rabbit
Clonality	Polyclonal
Purification	The antibody was affinity-purified from rabbit antiserum by affinity-chromatography using epitope-specific immunogen.
Applications	WB IHC IF
Species Reactivity	Hu
Specificity	The antibody detects endogenous levels of total RPL36 protein.
Immunogen Type	Peptide
Immunogen Description	Synthesized peptide derived from internal of human RPL36.
Target Name	RPL36
Other Names	60S ribosomal protein L36;
Accession No.	Swiss-Prot: Q9Y3U8NCBI Gene ID: 25873
SDS-PAGE MW	12kd
Concentration	1.0mg/ml
Formulation	Rabbit IgG in phosphate buffered saline (without Mg <sup>2+</sup> and Ca <sup>2+</sup> ), pH 7.4, 150mM NaCl, 0.02% sodium azide and 50% glycerol.
Storage	Store at -20°C

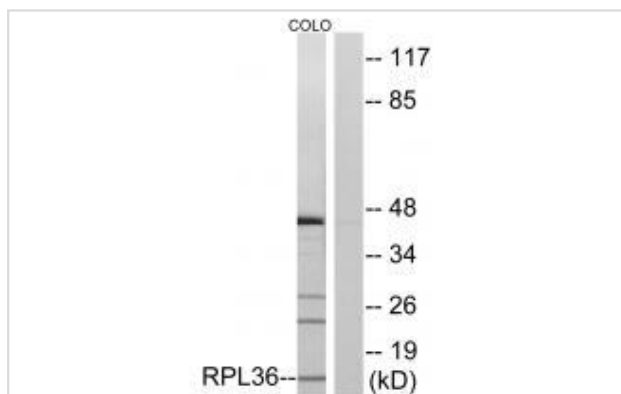
## Application Details

Western blotting: 1:500~1:3000

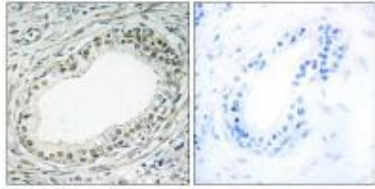
Immunohistochemistry: 1:50~1:100

Immunofluorescence: 1:100~1:500

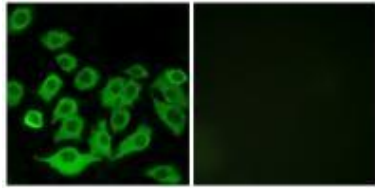
## Images



Western blot analysis of extracts from COLO cells, using RPL36 antibody #34358.



Immunohistochemistry analysis of paraffin-embedded human prostate carcinoma tissue using RPL36 antibody #34358.



Immunofluorescence analysis of A549 cells, using RPL36 antibody #34358.

## Background

Ribosomes, the organelles that catalyze protein synthesis, consist of a small 40S subunit and a large 60S subunit. Together these subunits are composed of 4 RNA species and approximately 80 structurally distinct proteins. This gene encodes a ribosomal protein that is a component of the 60S subunit. The protein belongs to the L36E family of ribosomal proteins. It is located in the cytoplasm. Transcript variants derived from alternative splicing exist; they encode the same protein. As is typical for genes encoding ribosomal proteins, there are multiple processed pseudogenes of this gene dispersed through the genome.

Yoshihama M., *Genome Res.* 12:379-390(2002).

Wiemann S., *Genome Res.* 11:422-435(2001).

Zhang Q.-H., *Genome Res.* 10:1546-1560(2000).

Note: This product is for in vitro research use only and is not intended for use in humans or animals.