

TOMM20 Antibody

Catalog No: #34806

Package Size: #34806-1 50ul #34806-2 100ul

Orders: order@signalwayantibody.com

Support: tech@signalwayantibody.com

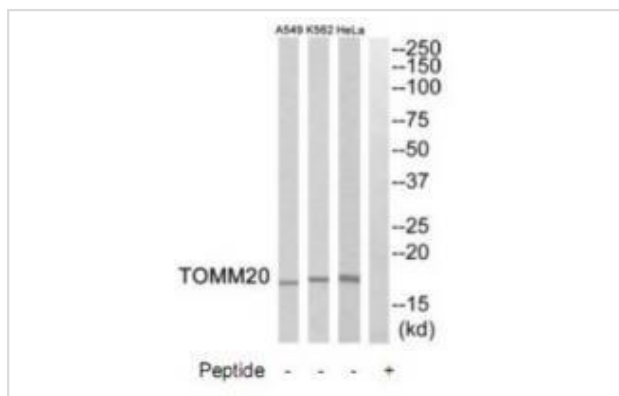
Description

Product Name	TOMM20 Antibody
Host Species	Rabbit
Clonality	Polyclonal
Purification	The antibody was affinity-purified from rabbit antiserum by affinity-chromatography using epitope-specific immunogen.
Applications	WB
Species Reactivity	Hu
Specificity	The antibody detects endogenous levels of total TOMM20 protein.
Immunogen Type	Peptide
Immunogen Description	Synthesized peptide derived from internal of human TOMM20.
Target Name	TOMM20
Other Names	Mitochondrial import receptor subunit TOM20 homolog; Mitochondrial 20 kDa outer membrane protein; Outer mitochondrial membrane receptor Tom20; KIAA0016;
Accession No.	Swiss-Prot: Q15388NCBI Gene ID: 9804
SDS-PAGE MW	17kd
Concentration	1.0mg/ml
Formulation	Rabbit IgG in phosphate buffered saline (without Mg ²⁺ and Ca ²⁺), pH 7.4, 150mM NaCl, 0.02% sodium azide and 50% glycerol.
Storage	Store at -20°C

Application Details

Western blotting: 1:500~1:3000

Images



Western blot analysis of extracts from HeLa cells, K562 cells and A549 cells, using TOMM20 antibody #34806.

Background

Central component of the receptor complex responsible for the recognition and translocation of cytosolically synthesized mitochondrial preproteins. Together with TOM22 functions as the transit peptide receptor at the surface of the mitochondrion outer membrane and facilitates the movement of preproteins into the TOM40 translocation pore By similarity.

Goping I.S., FEBS Lett. 373:45-50(1995).

Seki N., FEBS Lett. 375:307-310(1995).

Hernandez J.M., Gene 239:283-291(1999)

Note: This product is for in vitro research use only and is not intended for use in humans or animals.