

RAB40B Antibody

Catalog No: #34970

Package Size: #34970-1 50ul #34970-2 100ul

Orders: order@signalwayantibody.comSupport: tech@signalwayantibody.com

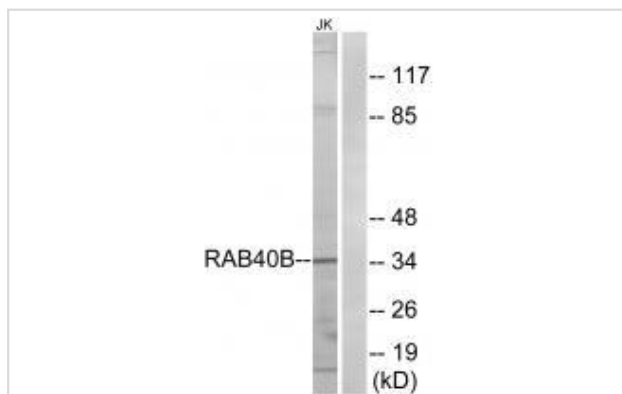
Description

Product Name	RAB40B Antibody
Host Species	Rabbit
Clonality	Polyclonal
Purification	The antibody was affinity-purified from rabbit antiserum by affinity-chromatography using epitope-specific immunogen.
Applications	WB
Species Reactivity	Hu
Specificity	The antibody detects endogenous levels of total RAB40B protein.
Immunogen Type	Peptide
Immunogen Description	Synthesized peptide derived from internal of human RAB40B.
Target Name	RAB40B
Other Names	Ras-related protein Rab-40B; SOCS box-containing protein RAR; Rar protein; RAB40B; SEC4L
Accession No.	Swiss-Prot: Q12829NCBI Gene ID: 10966
SDS-PAGE MW	34kd
Concentration	1.0mg/ml
Formulation	Rabbit IgG in phosphate buffered saline (without Mg ²⁺ and Ca ²⁺), pH 7.4, 150mM NaCl, 0.02% sodium azide and 50% glycerol.
Storage	Store at -20°C

Application Details

Western blotting: 1:500~1:3000

Images



Western blot analysis of extracts from Jurkat cells, using RAB40B antibody #34970.

Background

May be a substrate-recognition component of a SCF-like ECS (Elongin-Cullin-SOCS-box protein) E3 ubiquitin ligase complex which mediates the

ubiquitination and subsequent proteasomal degradation of target proteins By similarity.

Peng H., Submitted (JAN-1994) to the EMBL/GenBank/DDBJ databases.

The MGC Project Team; Genome Res. 14:2121-2127(2004).

Note: This product is for in vitro research use only and is not intended for use in humans or animals.