

## AIMP2 Antibody

Catalog No: #35586

Package Size: #35586-1 50ul #35586-2 100ul

Orders: order@signalwayantibody.com

Support: tech@signalwayantibody.com

## Description

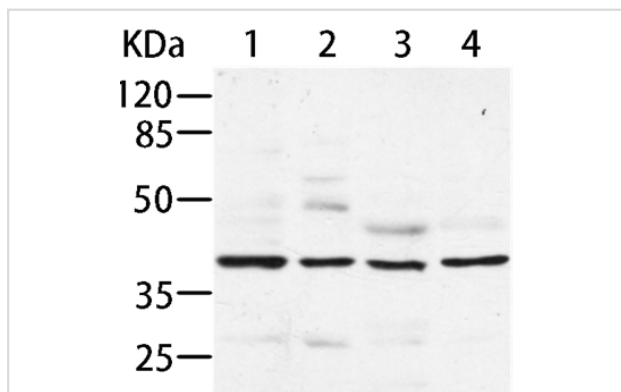
Product Name	AIMP2 Antibody
Host Species	Rabbit
Clonality	Polyclonal
Purification	Antigen affinity purification.
Applications	WB IHC
Species Reactivity	Hu
Specificity	The antibody detects endogenous levels of total AIMP2 protein.
Immunogen Type	Recombinant Protein
Immunogen Description	Fusion protein corresponding to residues near the N terminal of human Aminoacyl tRNA synthase complex-interacting multifunctional protein 2
Target Name	AIMP2
Other Names	P38; JTV1; JTV-1
Accession No.	Swiss-Prot#: Q13155 NCBI Gene ID: 7965Gene Accssion: BC002853
SDS-PAGE MW	35kd
Concentration	0.5mg/ml
Formulation	Rabbit IgG in pH7.3 PBS, 0.05% NaN <sub>3</sub> , 50% Glycerol.
Storage	Store at -20°C

## Application Details

Western blotting: 1:200-1:1000

Immunohistochemistry: 1:10-1:50

## Images



Gel: 8%SDS-PAGE

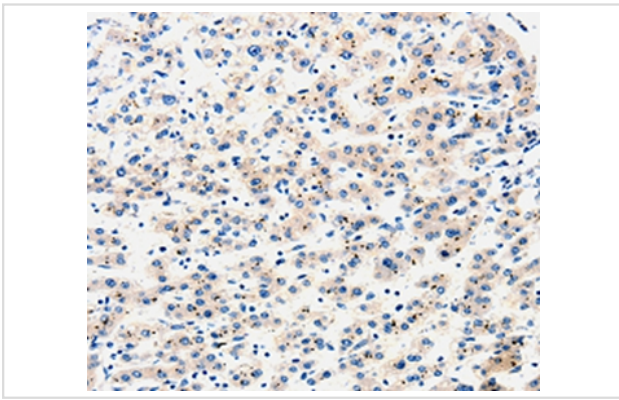
Lysates (from left to right): Hela, HepG2, MCF-7 and HT-29 cell

Amount of lysate: 40ug per lane

Primary antibody: 1/200 dilution

Secondary antibody dilution: 1/8000

Exposure time: 1 minute



Immunohistochemical analysis of paraffin-embedded Human liver cancer tissue using #35586 at dilution 1/25.

## Background

The JTV1 gene is located on chromosome 7p22 flanked by two genes, HRI and PMS2. JTV1 and HRI overlap slightly and are arranged in a tail-to-tail fashion. JTV1 and PMS2 are separated by approximately 200 base pairs and are arranged head-to-head. JTV1 is transcribed in the opposite direction compared to HRI and PMS2. The function of the JTV1 gene product is unknown.

Note: This product is for in vitro research use only and is not intended for use in humans or animals.