

## ANXA8 Antibody

Catalog No: #35621



Package Size: #35621-1 50ul #35621-2 100ul

Orders: [order@signalwayantibody.com](mailto:order@signalwayantibody.com)Support: [tech@signalwayantibody.com](mailto:tech@signalwayantibody.com)

## Description

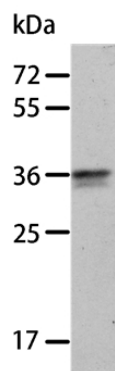
Product Name	ANXA8 Antibody
Host Species	Rabbit
Clonality	Polyclonal
Purification	Antigen affinity purification.
Applications	WB IHC
Species Reactivity	Hu
Specificity	The antibody detects endogenous levels of total ANXA8 protein.
Immunogen Type	Recombinant Protein
Immunogen Description	Fusion protein corresponding to a region derived from internal residues of human annexin A8
Target Name	ANXA8
Other Names	ANX8
Accession No.	Swiss-Prot#: P13928NCBI Gene ID: 653145Gene Accssion: BC073755
SDS-PAGE MW	37kd
Concentration	1.3mg/ml
Formulation	Rabbit IgG in pH7.3 PBS, 0.05% NaN <sub>3</sub> , 50% Glycerol.
Storage	Store at -20°C

## Application Details

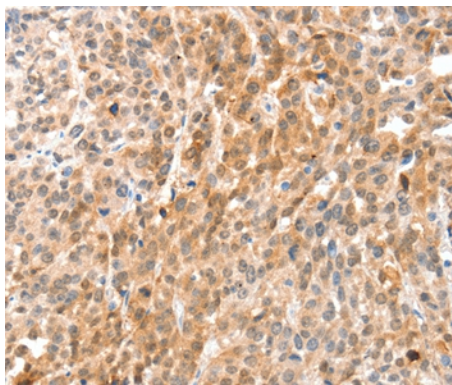
Western blotting: 1:200-1:1000

Immunohistochemistry: 1:50-1:100

## Images



Gel: 10%SDS-PAGE  
Lysate: 40ug A549 cell  
Primary antibody: 1/300 dilution  
Secondary antibody dilution: 1/8000  
Exposure time: 2 minutes



Immunohistochemical analysis of paraffin-embedded Human esophagus cancer tissue using #35621 at dilution 1/35.

## Background

This gene encodes a member of the annexin family of evolutionarily conserved  $\text{Ca}^{2+}$  and phospholipid binding proteins. The encoded protein may function as an anticoagulant that indirectly inhibits the thromboplastin-specific complex. Overexpression of this gene has been associated with acute myelocytic leukemia. A highly similar duplicated copy of this gene is found in close proximity on the long arm of chromosome 10.

Note: This product is for in vitro research use only and is not intended for use in humans or animals.