

ADAM11 Antibody

Catalog No: #37308



Package Size: #37308-1 50ul #37308-2 100ul

Orders: order@signalwayantibody.comSupport: tech@signalwayantibody.com

Description

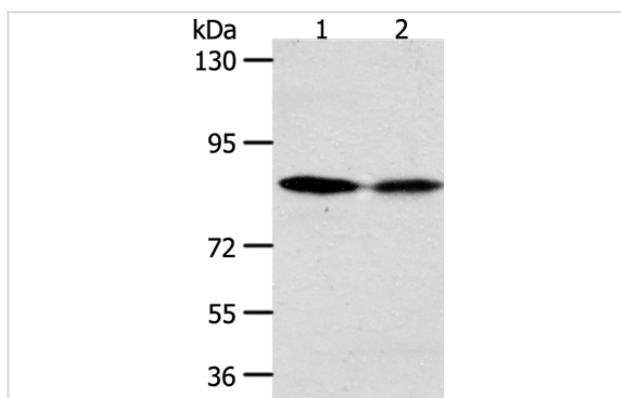
Product Name	ADAM11 Antibody
Host Species	Rabbit
Clonality	Polyclonal
Purification	Antigen affinity purification.
Applications	WB IHC
Species Reactivity	Human;Mouse
Specificity	The antibody detects endogenous levels of total ADAM11 protein.
Immunogen Type	Peptide
Immunogen Description	Synthetic peptide corresponding to a region derived from internal residues of human ADAM metalloproteinase domain 11
Conjugates	Unconjugated
Target Name	ADAM11
Other Names	MDC
Accession No.	Swiss-Prot#: O75078 NCBI Gene ID: 4185 Gene Accession: NP_002381
SDS-PAGE MW	83kd
Concentration	1.5mg/ml
Formulation	Rabbit IgG in pH7.3 PBS, 0.05% NaN ₃ , 50% Glycerol.
Storage	Store at -20°C

Application Details

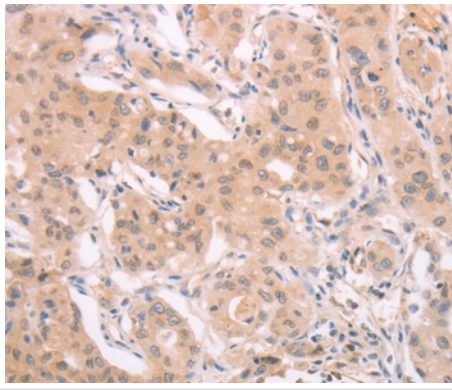
Western blotting: 1:200-1:1000

Immunohistochemistry: 1:50-1:200

Images



Gel: 10%SDS-PAGE
 Lysates (from left to right): HeLa and SKOV3 cell
 Amount of lysate: 50ug per lane
 Primary antibody: 1/500 dilution
 Secondary antibody dilution: 1/8000
 Exposure time: 10 minutes



Immunohistochemical analysis of paraffin-embedded Human lung cancer tissue using #37308 at dilution 1/40.

Background

This gene encodes a member of the ADAM (a disintegrin and metalloprotease) protein family. Members of this family are membrane-anchored proteins structurally related to snake venom disintegrins, and have been implicated in a variety of biological processes involving cell-cell and cell-matrix interactions, including fertilization, muscle development, and neurogenesis. This gene represents a candidate tumor suppressor gene for human breast cancer based on its location within a minimal region of chromosome 17q21 previously defined by tumor deletion mapping.

Note: This product is for in vitro research use only and is not intended for use in humans or animals.