

## APOBEC3D Antibody

Catalog No: #37339



Package Size: #37339-1 50ul #37339-2 100ul

Orders: order@signalwayantibody.com

Support: tech@signalwayantibody.com

## Description

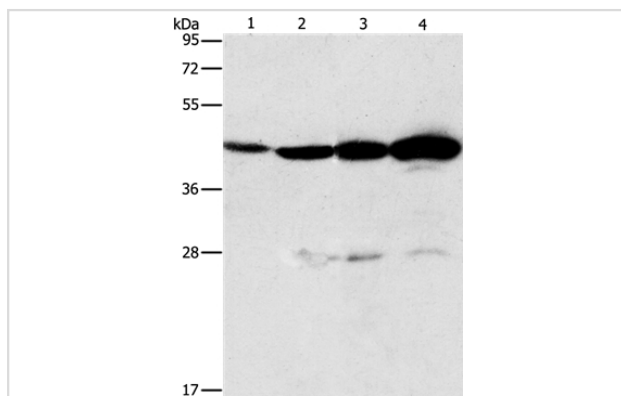
Product Name	APOBEC3D Antibody
Host Species	Rabbit
Clonality	Polyclonal
Purification	Antigen affinity purification.
Applications	WB IHC
Species Reactivity	Human;Mouse
Specificity	The antibody detects endogenous levels of total APOBEC3D protein.
Immunogen Type	Peptide
Immunogen Description	Synthetic peptide corresponding to a region derived from internal residues of human apolipoprotein B mRNA editing enzyme, catalytic polypeptide-like 3D
Conjugates	Unconjugated
Target Name	APOBEC3D
Other Names	A3D; ARP6; APOBEC3E; APOBEC3DE
Accession No.	Swiss-Prot#: Q6ICH2NCBI Gene ID: 140564Gene Accssion: NP_689639
SDS-PAGE MW	47kd
Concentration	2.9mg/ml
Formulation	Rabbit IgG in pH7.3 PBS, 0.05% NaN <sub>3</sub> , 50% Glycerol.
Storage	Store at -20°C

## Application Details

Western blotting: 1:500-1:2000

Immunohistochemistry: 1:50-1:200

## Images



Gel: 12%SDS-PAGE

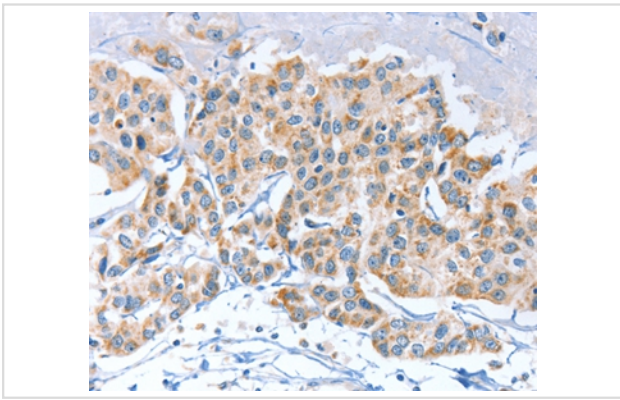
Lysates (from left to right): Mouse thymus tissue and A549 cell, Lovo and K562 cell

Amount of lysate: 40ug per lane

Primary antibody: 1/580 dilution

Secondary antibody dilution: 1/8000

Exposure time: 30 seconds



Immunohistochemical analysis of paraffin-embedded Human breast cancer tissue using #37339 at dilution 1/80.

## Background

This gene is a member of the cytidine deaminase gene family. It is one of a group of related genes found in a cluster, thought to result from gene duplication, on chromosome 22. Members of the cluster encode proteins that are structurally and functionally related to the C to U RNA-editing cytidine deaminase APOBEC1 and inhibit retroviruses, such as HIV, by deaminating cytosine residues in nascent retroviral cDNA.

Note: This product is for in vitro research use only and is not intended for use in humans or animals.