

ATRN Antibody

Catalog No: #37433



Package Size: #37433-1 50ul #37433-2 100ul

Orders: order@signalwayantibody.comSupport: tech@signalwayantibody.com

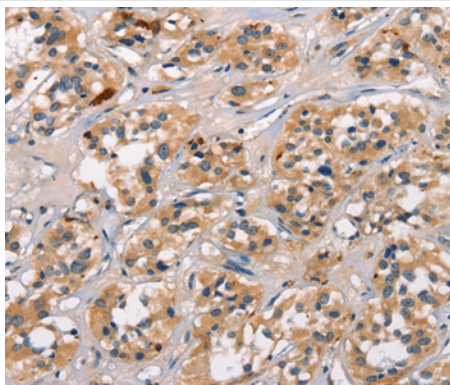
Description

Product Name	ATRN Antibody
Host Species	Rabbit
Clonality	Polyclonal
Purification	Antigen affinity purification.
Applications	IHC
Species Reactivity	Hu
Specificity	The antibody detects endogenous levels of total ATRN protein.
Immunogen Type	Peptide
Immunogen Description	Synthetic peptide corresponding to a region derived from internal residues of human attractin
Target Name	ATRN
Other Names	MGCA; DPPT-L
Accession No.	Swiss-Prot#: O75882NCBI Gene ID: 8455Gene Accssion: NP_001193976
Concentration	4mg/ml
Formulation	Rabbit IgG in pH7.3 PBS, 0.05% NaN ₃ , 50% Glycerol.
Storage	Store at -20°C

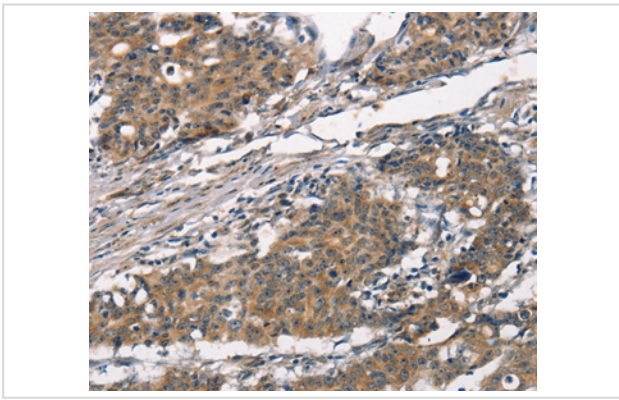
Application Details

Immunohistochemistry: 1:25-1:100

Images



Immunohistochemical analysis of paraffin-embedded Human thyroid cancer tissue using #37433 at dilution 1/30.



Immunohistochemical analysis of paraffin-embedded Human gastric cancer tissue using #37433 at dilution 1/30.

Background

Multiple transcript variants encoding different isoforms exist for this gene. One of the isoforms is a membrane-bound protein with sequence similarity to the mouse mahogany protein, a receptor involved in controlling obesity. The other two isoforms are secreted proteins involved in the initial immune cell clustering during inflammatory responses that may regulate the chemotactic activity of chemokines.

Note: This product is for in vitro research use only and is not intended for use in humans or animals.