

POU4F1 Antibody

Catalog No: #37447



Package Size: #37447-1 50ul #37447-2 100ul

Orders: order@signalwayantibody.comSupport: tech@signalwayantibody.com

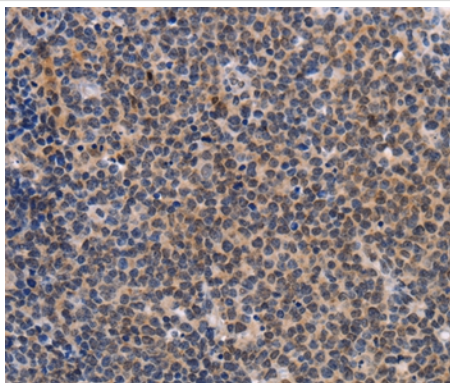
Description

Product Name	POU4F1 Antibody
Host Species	Rabbit
Clonality	Polyclonal
Purification	Antigen affinity purification.
Applications	IHC
Species Reactivity	Human;Mouse
Specificity	The antibody detects endogenous levels of total POU4F1 protein.
Immunogen Type	Peptide
Immunogen Description	Synthetic peptide corresponding to residues near the C terminal of human POU class 4 homeobox 1p
Conjugates	Unconjugated
Target Name	POU4F1
Other Names	BRN3A; RDC-1; Oct-T1; brn-3A
Accession No.	Swiss-Prot#: Q01851NCBI Gene ID: 5457Gene Accssion: NP_006228
Concentration	1.2mg/ml
Formulation	Rabbit IgG in pH7.3 PBS, 0.05% NaN ₃ , 50% Glycerol.
Storage	Store at -20°C

Application Details

Immunohistochemistry: 1:25-1:100

Images



Immunohistochemical analysis of paraffin-embedded Human lymphoma tissue using #37447 at dilution 1/25.

Background

This gene encodes a member of the POU-IV class of neural transcription factors. This protein is expressed in a subset of retinal ganglion cells and may be involved in the developing sensory nervous system. This protein may also promote the growth of cervical tumors. A translocation of this gene is associated with some adult acute myeloid leukemias.

Note: This product is for in vitro research use only and is not intended for use in humans or animals.