

# CK8 Mouse Monoclonal Antibody

Catalog No: #38010

Package Size: #38010-1 50ul #38010-2 100ul

Orders: [order@signalwayantibody.com](mailto:order@signalwayantibody.com)Support: [tech@signalwayantibody.com](mailto:tech@signalwayantibody.com)

## Description

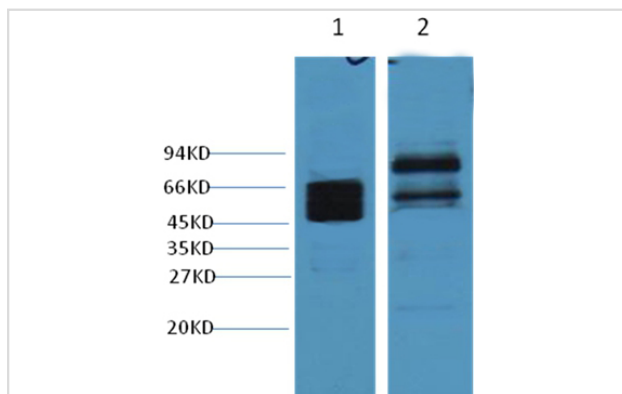
Product Name	CK8 Mouse Monoclonal Antibody
Host Species	Mouse
Clonality	Monoclonal
Clone No.	8G8
Purification	Affinity purification using immunogen.
Applications	WB IHC
Species Reactivity	Hu Ms Rt
Specificity	The CK8 Mouse Monoclonal antibody detects endogenous CK8 proteins.
Conjugates	Unconjugated
Target Name	CK8
Other Names	CARD2; CK-8; CK8; CYK8; cytokeratin 8; Cytokeratin-8; K2C8; K8; keratin 8
Accession No.	Swiss-Prot#:P05787
SDS-PAGE MW	54kd
Concentration	1.0mg/ml
Formulation	Mouse IgG1 in phosphate buffered saline (without Mg <sup>2+</sup> and Ca <sup>2+</sup> ), pH 7.4, 150mM NaCl, 0.02% sodium azide and 50% glycerol.
Storage	Store at -20°C

## Application Details

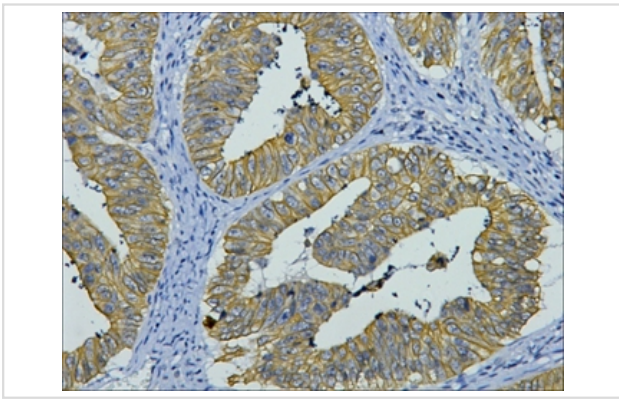
Western blotting: 1:2000~1:5000

Immunohistochemistry: 1:200

## Images



Western blot analysis of Hela (lane 1) and Mouse Brain (lane 2), using #38010 diluted at 1:4,000.



IHC staining of human colon cancer tissue with CK8 mouse mAb(8G8) diluted at 1:200.

## Background

Cytokeratin 8 belongs to the type B (basic) subfamily of high molecular weight keratins and exists in combination with cytokeratin 18. Cytokeratin 8 is primarily found in the non squamous epithelia and is present in majority of adenocarcinomas and ductal carcinomas. It is absent in squamous cell carcinomas.

## Published Papers

el at., A Novel Airway-Organoid Model Based on a Nano-Self-Assembling Peptide: Construction and Application in Adenovirus Infection Studies In Int J Nanomedicine On 2023 Sep 14 by Yun-E Xu , Di-Shu Ao et al. PMID:37727652, , (2023)

[PMID:37727652](https://pubmed.ncbi.nlm.nih.gov/37727652/)

Note: This product is for in vitro research use only and is not intended for use in humans or animals.