

## GEMIN2 antibody

Catalog No: #38570

Package Size: #38570-1 50ul #38570-2 100ul

Orders: [order@signalwayantibody.com](mailto:order@signalwayantibody.com)Support: [tech@signalwayantibody.com](mailto:tech@signalwayantibody.com)

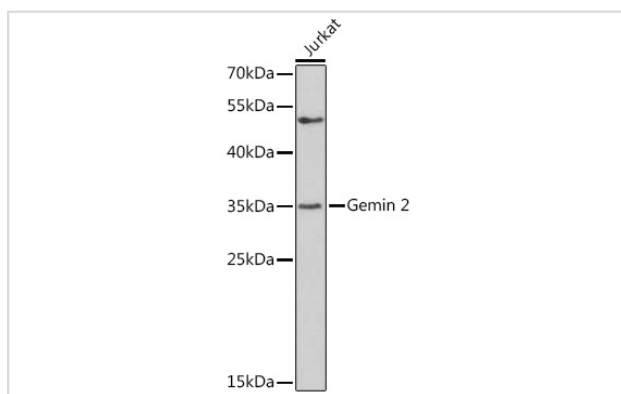
## Description

Product Name	GEMIN2 antibody
Host Species	Rabbit
Clonality	Polyclonal
Isotype	IgG
Purification	Affinity purification
Applications	WB,IHC
Species Reactivity	Human;Mouse;Rat
Specificity	The antibody detects endogenous level of total GEMIN2 protein.
Immunogen Type	Peptide
Immunogen Description	A synthetic peptide of human Gemin 2
Conjugates	Unconjugated
Target Name	GEMIN2
Other Names	GEMIN2;SIP1;SIP1-delta
Accession No.	Uniprot:O14893GeneID:8487
SDS-PAGE MW	35kDa
Concentration	1.0mg/ml
Formulation	PBS with 0.02% sodium azide,50% glycerol,pH7.3.
Storage	Store at -20°C. Avoid freeze / thaw cycles.

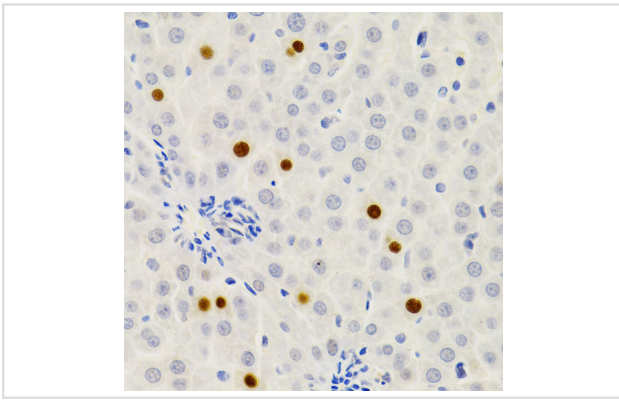
## Application Details

WB □ 1:500 - 1:1000 IHC □ 1:50 - 1:200

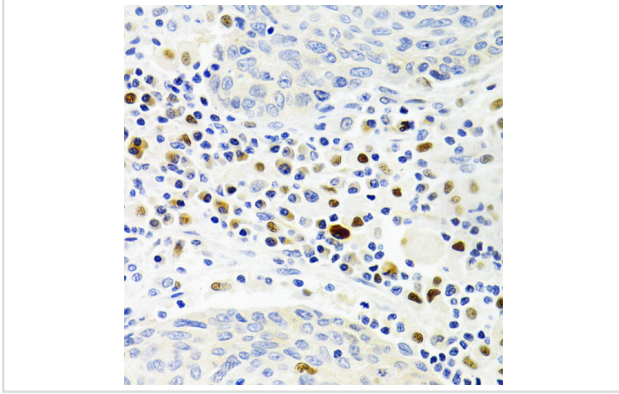
## Images



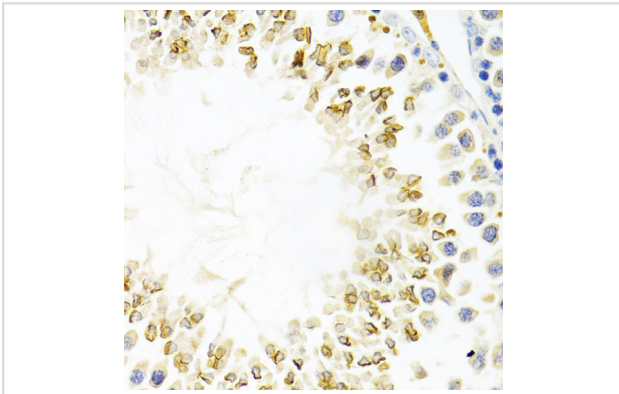
Western blot analysis of extracts of Jurkat cells, using Gemin 2 antibody.



Immunohistochemistry of paraffin-embedded rat liver using Gemin 2 Antibody.



Immunohistochemistry of paraffin-embedded human lung cancer using Gemin 2 Antibody.



Immunohistochemistry of paraffin-embedded mouse testis using Gemin 2 Antibody.

## Background

This gene encodes one of the proteins found in the SMN complex, which consists of several gemin proteins and the protein known as the survival of motor neuron protein. The SMN complex is localized to a subnuclear compartment called gems (gemini of coiled bodies) and is required for assembly of spliceosomal snRNPs and for pre-mRNA splicing. This protein interacts directly with the survival of motor neuron protein and it is required for formation of the SMN complex. A knockout mouse targeting the mouse homolog of this gene exhibited disrupted snRNP assembly and motor neuron degeneration.

Note: This product is for in vitro research use only and is not intended for use in humans or animals.