

# Rabbit IgG (H+L) Monoclonal Antibody

Catalog No: #40496



Package Size: #40496-1 50ul #40496-2 100ul

Orders: [order@signalwayantibody.com](mailto:order@signalwayantibody.com)

Support: [tech@signalwayantibody.com](mailto:tech@signalwayantibody.com)

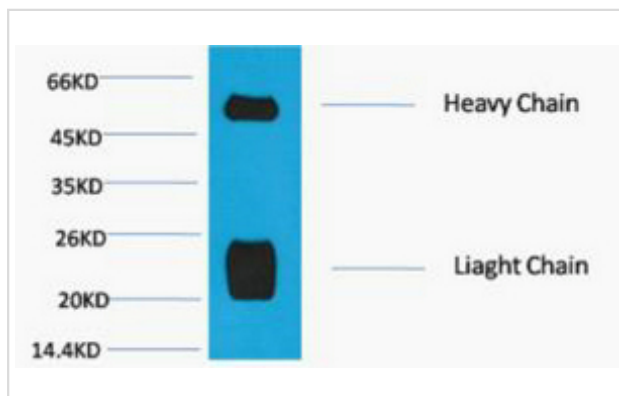
## Description

Product Name	Rabbit IgG (H+L) Monoclonal Antibody
Host Species	Mouse
Clonality	Monoclonal
Purification	The antibody was affinity-purified from antiserum by affinity-chromatography
Applications	WB
Species Reactivity	Rat
Specificity	The antibody reacts with whole molecule rabbit IgG. The antibody may cross-react with immunoglobulins from other species.
Conjugates	Unconjugated
SDS-PAGE MW	25,55kd
Concentration	1mg/ml
Formulation	Liquid in PBS containing 50% glycerol, 0.5% BSA and 0.02% sodium azide.
Storage	Store at -20°C/1 year

## Application Details

Western blotting: 1:2000-5000

## Images



Western blot analysis of Reduced Rabbit IgG, H+L, diluted at 1:10000.

## Published Papers

Caixia Yan;Qilin Diao;Yuxi Zhao;Cheng Zhang;Xiaoya He;Ruijie Huang;Yan Li et al., Fusobacterium nucleatum infection-induced neurodegeneration and abnormal gut microbiota composition in Alzheimer's disease-like rats, , (2022)

PMID:36188448

---

Note: This product is for in vitro research use only and is not intended for use in humans or animals.