

Cleaved-Caspase-9 p35 (D315) Polyclonal Antibody

Catalog No: #40504



Package Size: #40504-1 50ul #40504-2 100ul

Orders: order@signalwayantibody.comSupport: tech@signalwayantibody.com

Description

Product Name	Cleaved-Caspase-9 p35 (D315) Polyclonal Antibody
Host Species	Rabbit
Clonality	Polyclonal
Purification	The antibody was affinity-purified from rabbit antiserum by affinity-chromatography using epitope-specific immunogen.
Applications	WB;IHC;IF;ELISA
Species Reactivity	Human
Specificity	Cleaved-Caspase-9 p35 (D315) Polyclonal Antibody detects endogenous levels of fragment of activated Caspase-9 p35 protein resulting from cleavage adjacent to D315.
Immunogen Description	Synthesized peptide derived from the Internal region of human Caspase-9 p35.
Conjugates	Unconjugated
Target Name	Cleaved-Caspase-9 p35
Other Names	CASP9; MCH6; Caspase-9; CASP-9; Apoptotic protease Mch-6; Apoptotic protease-activating factor 3; APAF-3; ICE-like apoptotic protease 6; ICE-LAP6
Accession No.	Swiss-Prot: P55211NCBI Gene ID: 842
Calculated MW	17kDa/30kDa/36kDa/46kDa
SDS-PAGE MW	35kD
Concentration	1mg/ml
Formulation	Liquid in PBS containing 50% glycerol, 0.5% BSA and 0.02% sodium azide.
Storage	Store at -20°C/1 year

Application Details

Western Blot: 1/500 - 1/2000.

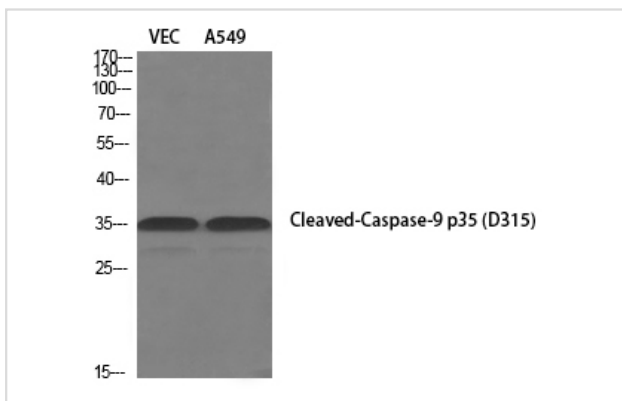
Immunohistochemistry: 1/100 - 1/300.

Immunofluorescence: 1/200 - 1/1000.

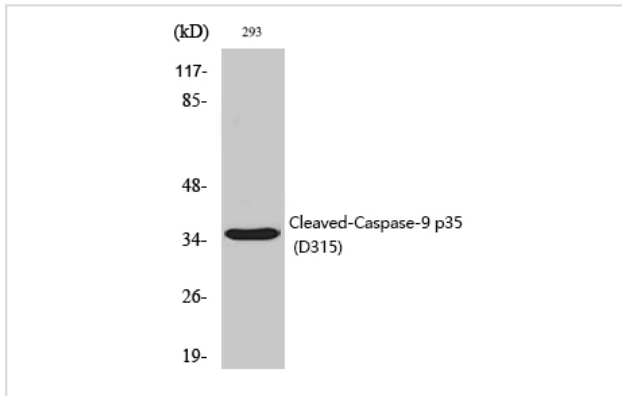
ELISA: 1/10000.

Not yet tested in other applications.

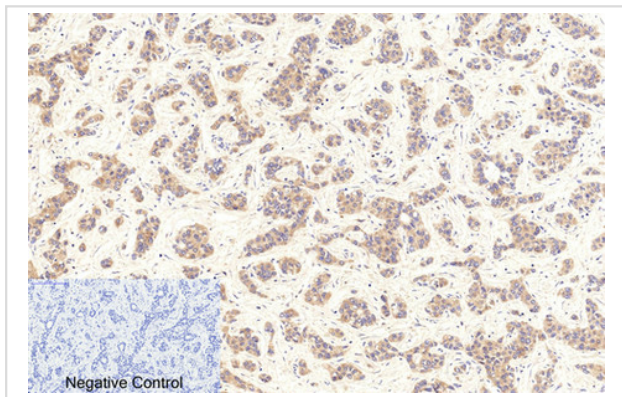
Images



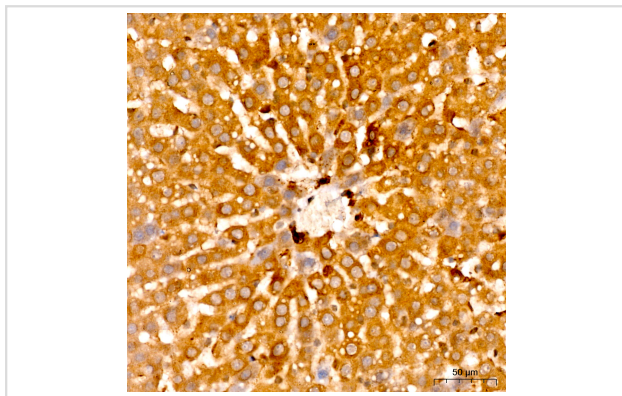
Western Blot analysis of extracts from 293 cells using Cleaved-Caspase-9 p35 (D315) Polyclonal Antibody.



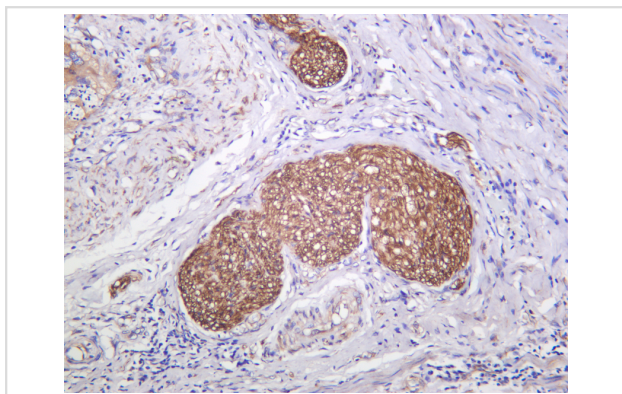
Western Blot analysis of extracts from VEC and A549 cells using Cleaved-Caspase-9 p35 (D315) Polyclonal Antibody.



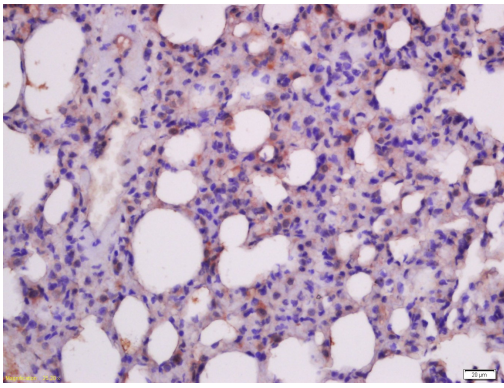
Immunohistochemistry of paraffin-embedded Human liver cancer tissue using Cleaved-Caspase-9 p35 (D315) Polyclonal Antibody.



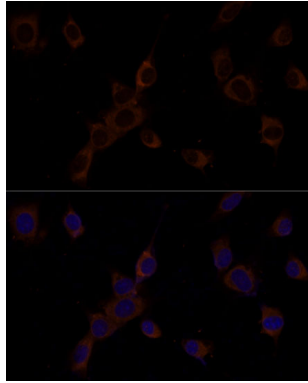
Immunohistochemistry of paraffin-embedded Rat liver tissue using Cleaved-Caspase-9 p35 (D315) Polyclonal Antibody.



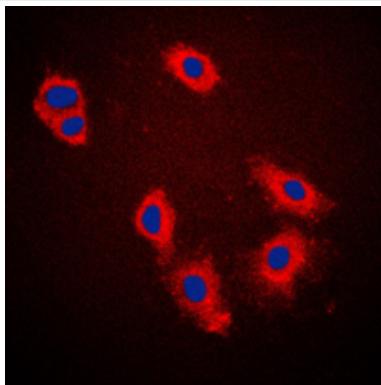
Immunohistochemistry of paraffin-embedded Human cervix carcinoma using Cleaved-Caspase-9 p35 (D315) Polyclonal Antibody.



Immunohistochemistry of paraffin-embedded Rat lung tissue using Cleaved-Caspase-9 p35 (D315) Polyclonal Antibody.



Immunofluorescence analysis of NIH/3T3 cells using Cleaved-Caspase-9 p35 (D315) Polyclonal Antibody.



Immunofluorescence analysis of HeLa cells using Cleaved-Caspase-9 p35 (D315) Polyclonal Antibody.

Published Papers

el at., Ampelopsin induces apoptosis in HepG2 human hepatoma cell line through extrinsic and intrinsic pathways: Involvement of P38 and ERK. In Environ Toxicol Pharmacol on 2015 Nov by Shimei Qi, Xianjuan Kou et al..PMID: 26476886 , , (2015)

[PMID:26476886](#)

el at., CD155 Cooperates with PD-1/PD-L1 to Promote Proliferation of Esophageal Squamous Cancer Cells via PI3K/Akt and MAPK Signaling Pathways. In Cancers (Basel) on 2022 Nov 15 by Xiyang Tan, Jie Yang, et al..PMID:36428703, , (2022)

[PMID:36428703](#)

el at., Anti-Tumor Effect of Heat-Killed Bifidobacterium bifidum on Human Gastric Cancer through Akt-p53-Dependent Mitochondrial Apoptosis in Xenograft Models. In Int J Mol Sci on 2022 Aug 29 by SukJin Kim, Hwan Hee Lee,et al..PMID:36077182, , (2022)

[PMID:36077182](#)

Note: This product is for in vitro research use only and is not intended for use in humans or animals.