

CCRL1 Polyclonal Antibody

Catalog No: #40692



Package Size: #40692-1 50ul #40692-2 100ul

Orders: order@signalwayantibody.comSupport: tech@signalwayantibody.com

Description

Product Name	CCRL1 Polyclonal Antibody
Host Species	Rabbit
Clonality	Polyclonal
Purification	The antibody was affinity-purified from rabbit antiserum by affinity-chromatography using epitope-specific immunogen.
Applications	WB IF ELISA
Species Reactivity	Human;Mouse
Specificity	CCRL1 Polyclonal Antibody detects endogenous levels of CCRL1 protein.
Immunogen Type	peptide
Immunogen Description	Synthesized peptide derived from the N-terminal region of human CCRL1.
Conjugates	Unconjugated
Target Name	CCRL1
Other Names	CCRL1; CCBP2; CCR11; VSHK1; C-C chemokine receptor type 11; C-C CKR-11; CC-CKR-11; CCR-11; CC chemokine receptor-like 1; CCRL1; CCX CKR
Accession No.	Swiss-Prot: Q9NPB9NCBI Gene ID: 51554
SDS-PAGE MW	40kd
Concentration	1mg/ml
Formulation	Liquid in PBS containing 50% glycerol, 0.5% BSA and 0.02% sodium azide.
Storage	Store at -20°C/1 year

Application Details

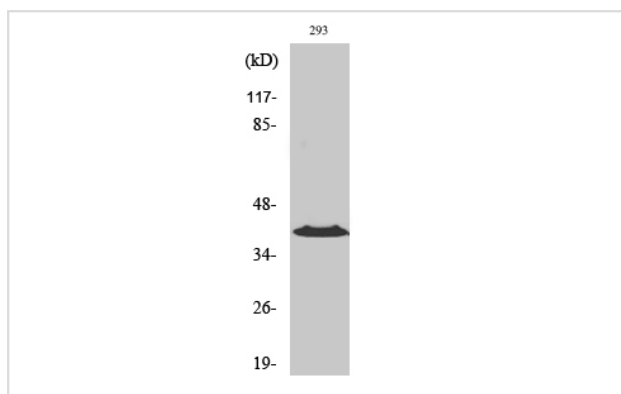
Western Blot: 1/500 - 1/2000.

Immunofluorescence: 1/200 - 1/1000.

ELISA: 1/5000.

Not yet tested in other applications.

Images



Western Blot analysis of 293 cells using CCRL1 Polyclonal Antibody

Note: This product is for in vitro research use only and is not intended for use in humans or animals.