

## CNK2 Polyclonal Antibody

Catalog No: #40767



Package Size: #40767-1 50ul #40767-2 100ul

Orders: [order@signalwayantibody.com](mailto:order@signalwayantibody.com)Support: [tech@signalwayantibody.com](mailto:tech@signalwayantibody.com)

## Description

Product Name	CNK2 Polyclonal Antibody
Host Species	Rabbit
Clonality	Polyclonal
Purification	The antibody was affinity-purified from rabbit antiserum by affinity-chromatography using epitope-specific immunogen.
Applications	WB IHC ELISA IF
Species Reactivity	Human;Mouse;Rat
Specificity	CNK2 Polyclonal Antibody detects endogenous levels of CNK2 protein.
Immunogen Description	Synthesized peptide derived from the Internal region of human CNK2.
Conjugates	Unconjugated
Target Name	CNK2
Other Names	CNKSR2; CNK2; KIAA0902; KSR2; Connector enhancer of kinase suppressor of ras 2; Connector enhancer of KSR 2; CNK homolog protein 2; CNK2
Accession No.	Swiss-Prot: Q8WXI2NCBI Gene ID: 22866
SDS-PAGE MW	117kd
Concentration	1mg/ml
Formulation	Liquid in PBS containing 50% glycerol, 0.5% BSA and 0.02% sodium azide.
Storage	Store at -20°C/1 year

## Application Details

Western Blot: 1/500 - 1/2000.

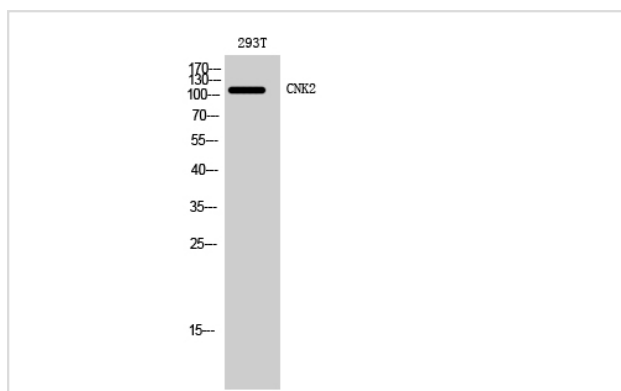
Immunohistochemistry: 1/100 - 1/300.

ELISA: 1/20000.

Not yet tested in other applications.

IF 1:50-20

## Images



Western Blot analysis of 293T cells using CNK2 Polyclonal Antibody

---

Note: This product is for in vitro research use only and is not intended for use in humans or animals.