

DOC-1 Polyclonal Antibody

Catalog No: #40849



Package Size: #40849-1 50ul #40849-2 100ul

Orders: order@signalwayantibody.comSupport: tech@signalwayantibody.com

Description

Product Name	DOC-1 Polyclonal Antibody
Host Species	Rabbit
Clonality	Polyclonal
Purification	The antibody was affinity-purified from rabbit antiserum by affinity-chromatography using epitope-specific immunogen.
Applications	WB ELISA
Species Reactivity	Human;Mouse
Specificity	DOC-1 Polyclonal Antibody detects endogenous levels of DOC-1 protein.
Immunogen Type	peptide
Immunogen Description	Synthesized peptide derived from the Internal region of human DOC-1.
Conjugates	Unconjugated
Target Name	DOC-1
Other Names	CDK2AP1; CDKAP1; DOC1; Cyclin-dependent kinase 2-associated protein 1; CDK2-associated protein 1; Deleted in oral cancer 1; DOC-1; Putative oral cancer suppressor
Accession No.	Swiss-Prot: O14519NCBI Gene ID: 8099
SDS-PAGE MW	20kd
Concentration	1mg/ml
Formulation	Liquid in PBS containing 50% glycerol, 0.5% BSA and 0.02% sodium azide.
Storage	Store at -20°C/1 year

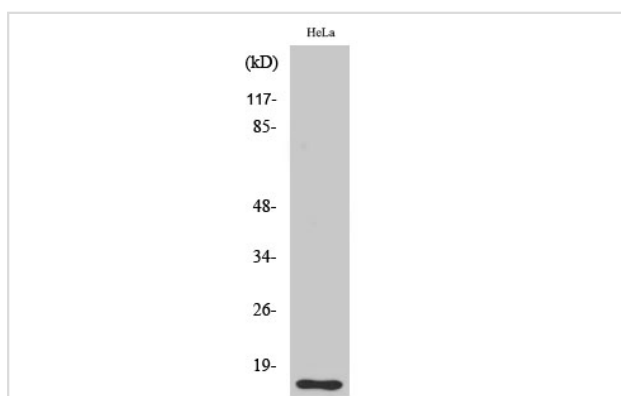
Application Details

Western Blot: 1/500 - 1/2000.

ELISA: 1/5000.

Not yet tested in other applications.

Images



Western Blot analysis of HeLa cells using DOC-1 Polyclonal Antibody

Note: This product is for in vitro research use only and is not intended for use in humans or animals.