

## ERdj3 Polyclonal Antibody

Catalog No: #40899



Package Size: #40899-1 50ul #40899-2 100ul

Orders: [order@signalwayantibody.com](mailto:order@signalwayantibody.com)Support: [tech@signalwayantibody.com](mailto:tech@signalwayantibody.com)

## Description

Product Name	ERdj3 Polyclonal Antibody
Host Species	Rabbit
Clonality	Polyclonal
Purification	The antibody was affinity-purified from rabbit antiserum by affinity-chromatography using epitope-specific immunogen.
Applications	WB IHC ELISA
Species Reactivity	Human;Mouse;Rat
Specificity	ERdj3 Polyclonal Antibody detects endogenous levels of ERdj3 protein.
Immunogen Type	peptide
Immunogen Description	Synthesized peptide derived from the Internal region of human ERdj3.
Conjugates	Unconjugated
Target Name	ERdj3
Other Names	DNAJB11; EDJ; ERJ3; HDJ9; PSEC0121; DnaJ homolog subfamily B member 11; APOBEC1-binding protein 2; ABBP-2; DnaJ protein homolog 9; ER-associated DNAJ; ER-associated Hsp40 co-chaperone; ER-associated dnaJ protein 3; ERdj3; ERj3p; HEDJ; Human
Accession No.	Swiss-Prot: Q9UBS4NCBI Gene ID: 51726
SDS-PAGE MW	40kd
Concentration	1mg/ml
Formulation	Liquid in PBS containing 50% glycerol, 0.5% BSA and 0.02% sodium azide.
Storage	Store at -20°C/1 year

## Application Details

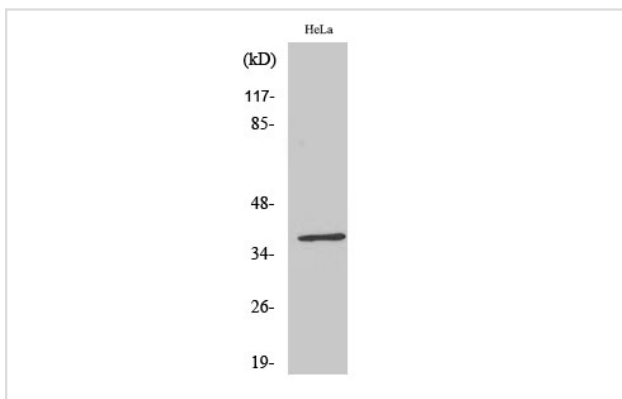
Western Blot: 1/500 - 1/2000.

Immunohistochemistry: 1/100 - 1/300.

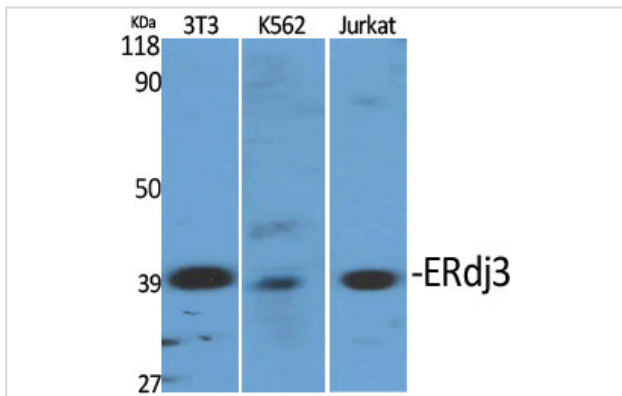
ELISA: 1/20000.

Not yet tested in other applications.

## Images



Western Blot analysis of MCF7 cells using ERdj3 Polyclonal Antibody



Western Blot analysis of NIH-3T3 K562 Jurkat cells using ERdj3 Polyclonal Antibody

---

Note: This product is for in vitro research use only and is not intended for use in humans or animals.