

KEPI Polyclonal Antibody

Catalog No: #41091



Package Size: #41091-1 50ul #41091-2 100ul

Orders: order@signalwayantibody.comSupport: tech@signalwayantibody.com

Description

Product Name	KEPI Polyclonal Antibody
Host Species	Rabbit
Clonality	Polyclonal
Purification	The antibody was affinity-purified from rabbit antiserum by affinity-chromatography using epitope-specific immunogen.
Applications	WB IHC IF ELISA
Species Reactivity	Human;Mouse;Rat
Specificity	KEPI Polyclonal Antibody detects endogenous levels of KEPI protein.
Immunogen Type	peptide
Immunogen Description	Synthesized peptide derived from the Internal region of human KEPI.
Conjugates	Unconjugated
Target Name	KEPI
Other Names	PPP1R14C; KEPI; Protein phosphatase 1 regulatory subunit 14C; Kinase-enhanced PP1 inhibitor; PKC-potentiated PP1 inhibitory protein; Serologically defined breast cancer antigen NY-BR-81
Accession No.	Swiss-Prot: Q8TAE6NCBI Gene ID: 81706
SDS-PAGE MW	20kd
Concentration	1mg/ml
Formulation	Liquid in PBS containing 50% glycerol, 0.5% BSA and 0.02% sodium azide.
Storage	Store at -20°C/1 year

Application Details

Western Blot: 1/500 - 1/2000.

Immunohistochemistry: 1/100 - 1/300.

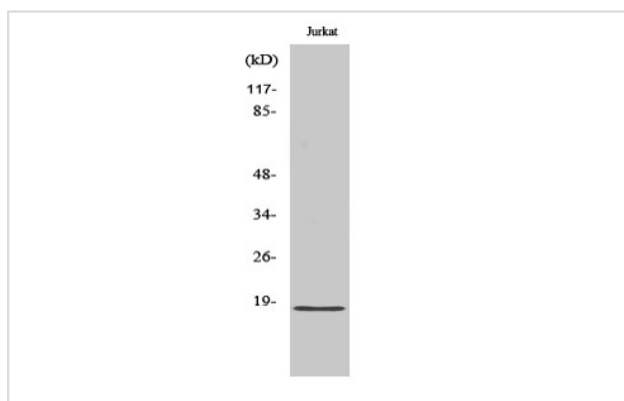
Immunofluorescence: 1/200 - 1/1000.

ELISA: 1/20000.

Not yet tested in other applications.

Images

Western Blot analysis of COLO205 cells using KEPI Polyclonal Antibody



Note: This product is for in vitro research use only and is not intended for use in humans or animals.