

MRG15 Polyclonal Antibody

Catalog No: #41165



Package Size: #41165-1 50ul #41165-2 100ul

Orders: order@signalwayantibody.comSupport: tech@signalwayantibody.com

Description

Product Name	MRG15 Polyclonal Antibody
Host Species	Rabbit
Clonality	Polyclonal
Purification	The antibody was affinity-purified from rabbit antiserum by affinity-chromatography using epitope-specific immunogen.
Applications	WB IHC IF ELISA
Species Reactivity	Human;Mouse
Specificity	MRG15 Polyclonal Antibody detects endogenous levels of MRG15 protein.
Immunogen Type	peptide
Immunogen Description	Synthesized peptide derived from the Internal region of human MRG15.
Conjugates	Unconjugated
Target Name	MRG15
Other Names	MORF4L1; MRG15; FWP006; HSPC008; HSPC061; PP368; Mortality factor 4-like protein 1; MORF-related gene 15 protein; Protein MSL3-1; Transcription factor-like protein MRG15
Accession No.	Swiss-Prot: Q9UBU8NCBI Gene ID: 10933
SDS-PAGE MW	41kd
Concentration	1mg/ml
Formulation	Liquid in PBS containing 50% glycerol, 0.5% BSA and 0.02% sodium azide.
Storage	Store at -20°C/1 year

Application Details

Western Blot: 1/500 - 1/2000.

Immunohistochemistry: 1/100 - 1/300.

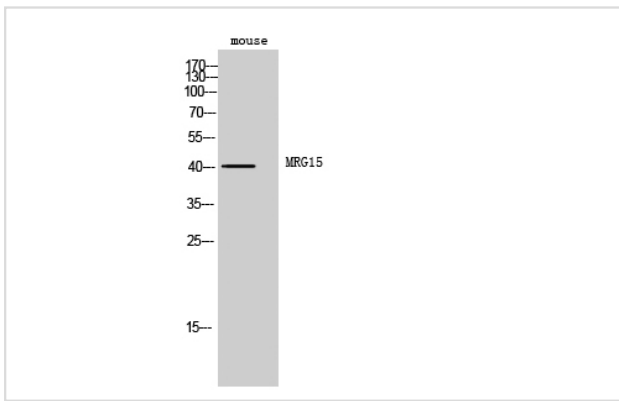
Immunofluorescence: 1/200 - 1/1000.

ELISA: 1/20000.

Not yet tested in other applications.

Images

Western Blot analysis of mouse cells using MRG15 Polyclonal Antibody



Note: This product is for in vitro research use only and is not intended for use in humans or animals.