

MRP7 Polyclonal Antibody

Catalog No: #41167



Package Size: #41167-1 50ul #41167-2 100ul

Orders: order@signalwayantibody.comSupport: tech@signalwayantibody.com

Description

Product Name	MRP7 Polyclonal Antibody
Host Species	Rabbit
Clonality	Polyclonal
Purification	The antibody was affinity-purified from rabbit antiserum by affinity-chromatography using epitope-specific immunogen.
Applications	WB ELISA
Species Reactivity	Human;Monkey
Specificity	MRP7 Polyclonal Antibody detects endogenous levels of MRP7 protein.
Immunogen Type	peptide
Immunogen Description	Synthesized peptide derived from the Internal region of human MRP7.
Conjugates	Unconjugated
Target Name	MRP7
Other Names	ABCC10; MRP7; SIMRP7; Multidrug resistance-associated protein 7; ATP-binding cassette sub-family C member 10
Accession No.	Swiss-Prot: Q5T3U5NCBI Gene ID: 89845
SDS-PAGE MW	162kd
Concentration	1mg/ml
Formulation	Liquid in PBS containing 50% glycerol, 0.5% BSA and 0.02% sodium azide.
Storage	Store at -20°C/1 year

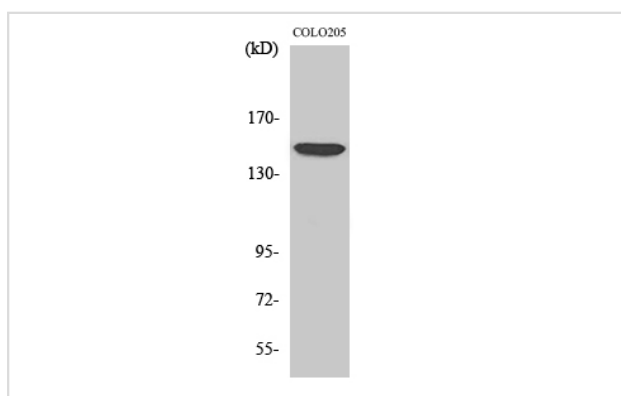
Application Details

Western Blot: 1/500 - 1/2000.

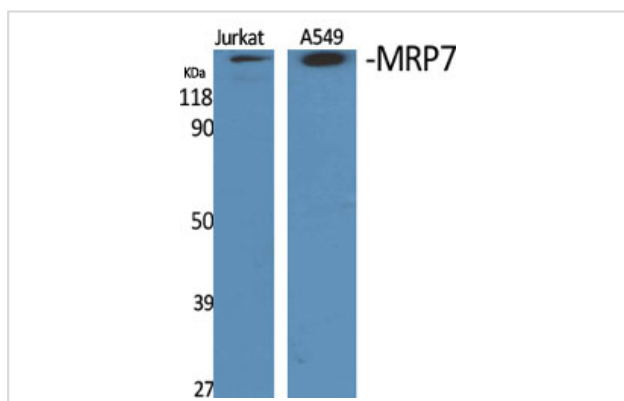
ELISA: 1/40000.

Not yet tested in other applications.

Images



Western Blot analysis of COS7 cells using MRP7 Polyclonal Antibody



Western Blot analysis of Jurkat A549 cells using MRP7 Polyclonal Antibody

Note: This product is for in vitro research use only and is not intended for use in humans or animals.