

## MRP-L14 Polyclonal Antibody

Catalog No: #41170



Package Size: #41170-1 50ul #41170-2 100ul

Orders: [order@signalwayantibody.com](mailto:order@signalwayantibody.com)Support: [tech@signalwayantibody.com](mailto:tech@signalwayantibody.com)

## Description

|                       |  |
|-----------------------|--|
| Product Name          | MRP-L14 Polyclonal Antibody  |
| Host Species          | Rabbit   |
| Clonality             | Polyclonal   |
| Purification          | The antibody was affinity-purified from rabbit antiserum by affinity-chromatography using epitope-specific immunogen.                      |
| Applications          | WB IHC ELISA   |
| Species Reactivity    | Human;Mouse;Rat  |
| Specificity           | MRP-L14 Polyclonal Antibody detects endogenous levels of MRP-L14 protein.  |
| Immunogen Type        | peptide  |
| Immunogen Description | Synthesized peptide derived from the C-terminal region of human MRP-L14.   |
| Conjugates            | Unconjugated   |
| Target Name           | MRP-L14  |
| Other Names           | MRPL14; MRPL32; RPML32; 39S ribosomal protein L14; mitochondrial; L14mt; MRP-L14; 39S ribosomal protein L32, mitochondrial; L32mt; MRP-L32 |
| Accession No.         | Swiss-Prot: Q6P1L8NCBI Gene ID: 64928  |
| SDS-PAGE MW           | 16kd   |
| Concentration         | 1mg/ml   |
| Formulation           | Liquid in PBS containing 50% glycerol, 0.5% BSA and 0.02% sodium azide.  |
| Storage               | Store at -20°C/1 year  |

## Application Details

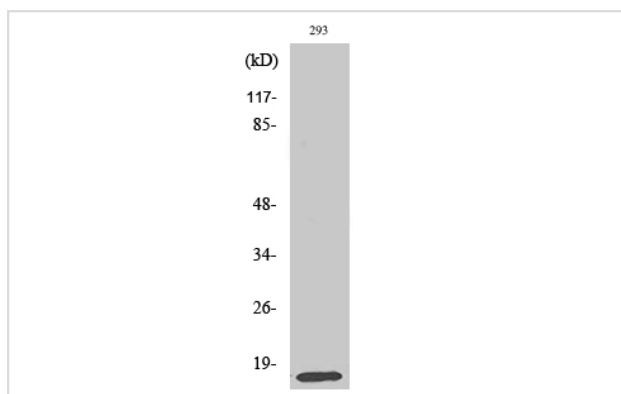
Western Blot: 1/500 - 1/2000.

Immunohistochemistry: 1/100 - 1/300.

ELISA: 1/20000.

Not yet tested in other applications.

## Images



Western Blot analysis of COLO205 cells using MRP-L14 Polyclonal Antibody

---

Note: This product is for in vitro research use only and is not intended for use in humans or animals.