

MRP-L21 Polyclonal Antibody

Catalog No: #41173



Package Size: #41173-1 50ul #41173-2 100ul

Orders: order@signalwayantibody.comSupport: tech@signalwayantibody.com

Description

Product Name	MRP-L21 Polyclonal Antibody
Host Species	Rabbit
Clonality	Polyclonal
Purification	The antibody was affinity-purified from rabbit antiserum by affinity-chromatography using epitope-specific immunogen.
Applications	WB IHC ELISA
Species Reactivity	Human;Mouse
Specificity	MRP-L21 Polyclonal Antibody detects endogenous levels of MRP-L21 protein.
Immunogen Type	peptide
Immunogen Description	Synthesized peptide derived from the Internal region of human MRP-L21.
Conjugates	Unconjugated
Target Name	MRP-L21
Other Names	MRPL21; 39S ribosomal protein L21; mitochondrial; L21mt; MRP-L21
Accession No.	Swiss-Prot: Q7Z2W9NCBI Gene ID: 219927
SDS-PAGE MW	23kd
Concentration	1mg/ml
Formulation	Liquid in PBS containing 50% glycerol, 0.5% BSA and 0.02% sodium azide.
Storage	Store at -20°C/1 year

Application Details

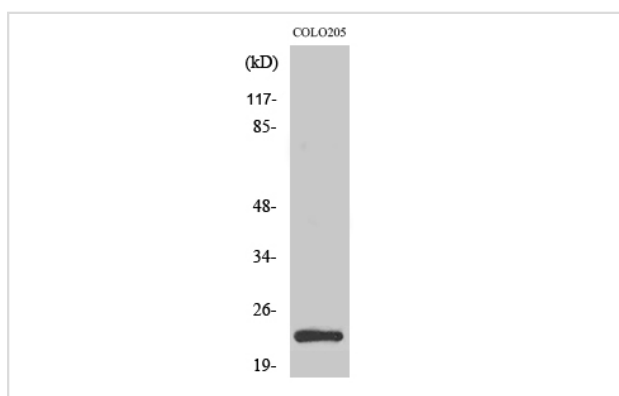
Western Blot: 1/500 - 1/2000.

Immunohistochemistry: 1/100 - 1/300.

ELISA: 1/40000.

Not yet tested in other applications.

Images



Western Blot analysis of COLO205 cells using MRP-L21 Polyclonal Antibody

Note: This product is for in vitro research use only and is not intended for use in humans or animals.