

## NEEP21 Polyclonal Antibody

Catalog No: #41211

Package Size: #41211-1 50ul #41211-2 100ul

Orders: [order@signalwayantibody.com](mailto:order@signalwayantibody.com)Support: [tech@signalwayantibody.com](mailto:tech@signalwayantibody.com)

## Description

Product Name	NEEP21 Polyclonal Antibody
Host Species	Rabbit
Clonality	Polyclonal
Purification	The antibody was affinity-purified from rabbit antiserum by affinity-chromatography using epitope-specific immunogen.
Applications	WB IHC ELISA
Species Reactivity	Human;Mouse;Rat
Specificity	NEEP21 Polyclonal Antibody detects endogenous levels of NEEP21 protein.
Immunogen Type	peptide
Immunogen Description	Synthesized peptide derived from the Internal region of human NEEP21.
Conjugates	Unconjugated
Target Name	NEEP21
Other Names	NSG1; D4S234; Neuron-specific protein family member 1; Brain neuron cytoplasmic protein 1
Accession No.	Swiss-Prot: P42857NCBI Gene ID: 27065
SDS-PAGE MW	26kd
Concentration	1mg/ml
Formulation	Liquid in PBS containing 50% glycerol, 0.5% BSA and 0.02% sodium azide.
Storage	Store at -20°C/1 year

## Application Details

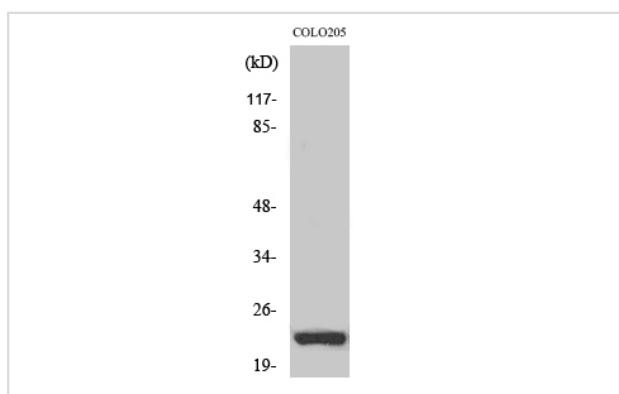
Western Blot: 1/500 - 1/2000.

Immunohistochemistry: 1/100 - 1/300.

ELISA: 1/20000.

Not yet tested in other applications.

## Images



Western Blot analysis of COLO205 cells using NEEP21 Polyclonal Antibody

---

Note: This product is for in vitro research use only and is not intended for use in humans or animals.