

## Ref-1 Polyclonal Antibody

Catalog No: #41392



Package Size: #41392-1 50ul #41392-2 100ul

Orders: [order@signalwayantibody.com](mailto:order@signalwayantibody.com)Support: [tech@signalwayantibody.com](mailto:tech@signalwayantibody.com)

## Description

Product Name	Ref-1 Polyclonal Antibody
Host Species	Rabbit
Clonality	Polyclonal
Purification	The antibody was affinity-purified from rabbit antiserum by affinity-chromatography using epitope-specific immunogen.
Applications	WB IHC ELISA
Species Reactivity	Human;Mouse;Rat
Specificity	Ref-1 Polyclonal Antibody detects endogenous levels of Ref-1 protein.
Immunogen Type	peptide
Immunogen Description	Synthesized peptide derived from the Internal region of human Ref-1.
Conjugates	Unconjugated
Target Name	Ref-1
Other Names	APEX1; APE; APE1; APEX; APX; HAP1; REF1; DNA-(apurinic or apyrimidinic site) lyase; APEX nuclease; APEN; Apurinic-apyrimidinic endonuclease 1; AP endonuclease 1; APE-1; REF-1; Redox factor-1
Accession No.	Swiss-Prot: P27695NCBI Gene ID: 328
SDS-PAGE MW	34kd
Concentration	1mg/ml
Formulation	Liquid in PBS containing 50% glycerol, 0.5% BSA and 0.02% sodium azide.
Storage	Store at -20°C/1 year

## Application Details

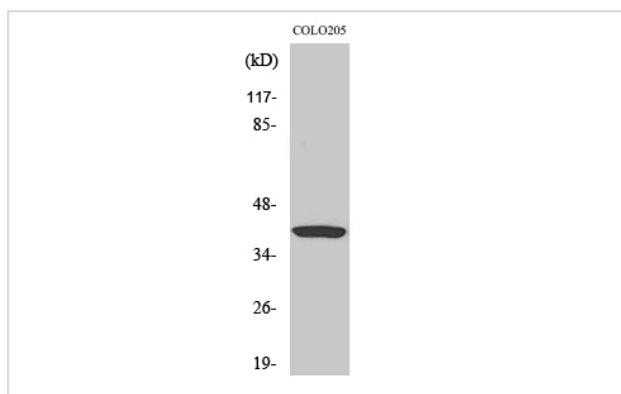
Western Blot: 1/500 - 1/2000.

Immunohistochemistry: 1/100 - 1/300.

ELISA: 1/10000.

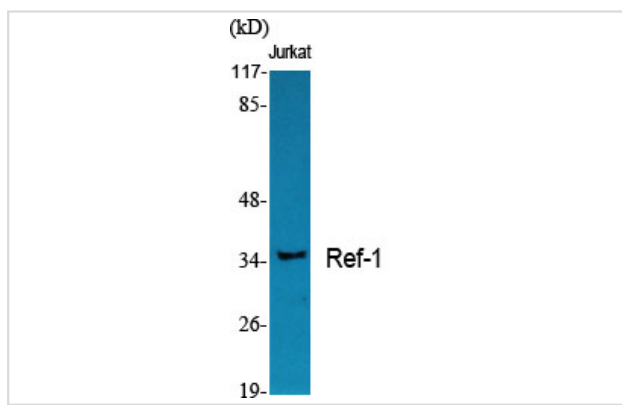
Not yet tested in other applications.

## Images



Western Blot analysis of HeLa cells using Ref-1 Polyclonal Antibody

Western Blot analysis of various cells using Ref-1 Polyclonal Antibody



---

Note: This product is for in vitro research use only and is not intended for use in humans or animals.