

TCP-1 ζ Polyclonal Antibody

Catalog No: #41484

Package Size: #41484-1 50ul #41484-2 100ul

Orders: order@signalwayantibody.comSupport: tech@signalwayantibody.com

Description

Product Name	TCP-1 ζ Polyclonal Antibody
Host Species	Rabbit
Clonality	Polyclonal
Purification	The antibody was affinity-purified from rabbit antiserum by affinity-chromatography using epitope-specific immunogen.
Applications	WB IHC ELISA
Species Reactivity	Human;Mouse;Rat
Specificity	TCP-1 ζ Polyclonal Antibody detects endogenous levels of TCP-1 ζ protein.
Immunogen Type	peptide
Immunogen Description	Synthesized peptide derived from the Internal region of human TCP-1 ζ .
Conjugates	Unconjugated
Target Name	TCP-1 ζ
Other Names	CCT6A; CCT6; CCTZ; T-complex protein 1 subunit zeta; TCP-1-zeta; Acute morphine dependence-related protein 2; CCT-zeta-1; HTR3; Tcp20
Accession No.	Swiss-Prot: P40227NCBI Gene ID: 908
SDS-PAGE MW	60kd
Concentration	1mg/ml
Formulation	Liquid in PBS containing 50% glycerol, 0.5% BSA and 0.02% sodium azide.
Storage	Store at -20°C/1 year

Application Details

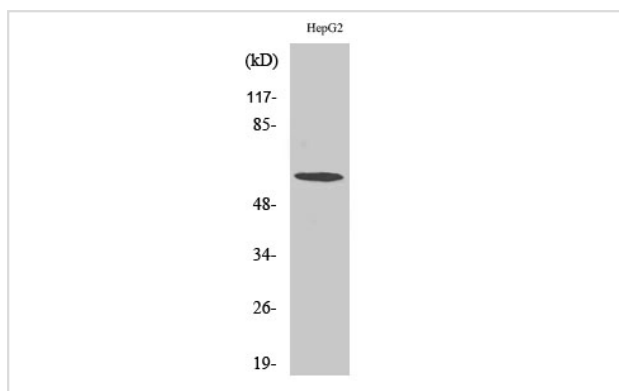
Western Blot: 1/500 - 1/2000.

Immunohistochemistry: 1/100 - 1/300.

ELISA: 1/10000.

Not yet tested in other applications.

Images

Western Blot analysis of HepG2 cells using TCP-1 ζ Polyclonal Antibody

Note: This product is for in vitro research use only and is not intended for use in humans or animals.