

## FGF-20 Polyclonal Antibody

Catalog No: #41587



Package Size: #41587-1 50ul #41587-2 100ul

Orders: [order@signalwayantibody.com](mailto:order@signalwayantibody.com)Support: [tech@signalwayantibody.com](mailto:tech@signalwayantibody.com)

## Description

Product Name	FGF-20 Polyclonal Antibody
Host Species	Rabbit
Clonality	Polyclonal
Purification	The antibody was affinity-purified from rabbit antiserum by affinity-chromatography using epitope-specific immunogen.
Applications	WB ELISA
Species Reactivity	Human;Mouse;Rat
Specificity	FGF-20 Polyclonal Antibody detects endogenous levels of FGF-20 protein.
Immunogen Type	peptide
Immunogen Description	Synthesized peptide derived from the Internal region of human FGF-20.
Conjugates	Unconjugated
Target Name	FGF-20
Other Names	FGF20; Fibroblast growth factor 20; FGF-20
Accession No.	Swiss-Prot: Q9NP95NCBI Gene ID: 26281
SDS-PAGE MW	223kd
Concentration	1mg/ml
Formulation	Liquid in PBS containing 50% glycerol, 0.5% BSA and 0.02% sodium azide.
Storage	Store at -20°C/1 year

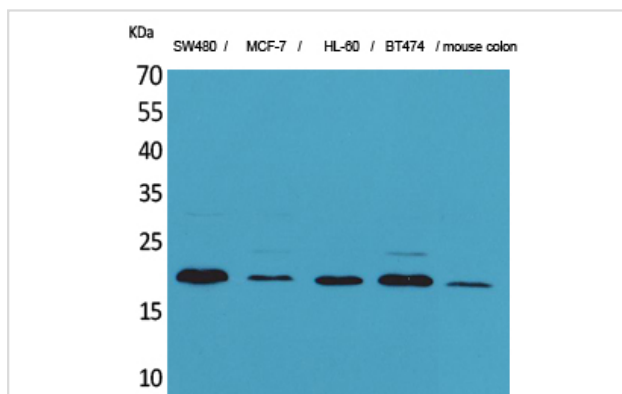
## Application Details

Western Blot: 1/500 - 1/2000.

ELISA: 1/20000.

Not yet tested in other applications.

## Images



Western Blot analysis of SW480 MCF-7 HL-60 BT474 mouse colon cells using FGF-20 Polyclonal Antibody

---

Note: This product is for in vitro research use only and is not intended for use in humans or animals.