

CEACAM1/5 Polyclonal Antibody

Catalog No: #41614

Package Size: #41614-1 50ul #41614-2 100ul

Orders: order@signalwayantibody.comSupport: tech@signalwayantibody.com

Description

Product Name	CEACAM1/5 Polyclonal Antibody
Host Species	Rabbit
Clonality	Polyclonal
Purification	The antibody was affinity-purified from rabbit antiserum by affinity-chromatography using epitope-specific immunogen.
Applications	WB ELISA
Species Reactivity	Hu
Specificity	CEACAM1/5 Polyclonal Antibody detects endogenous levels of CEACAM1/5 protein.
Immunogen Type	peptide
Immunogen Description	Synthesized peptide derived from the N-terminal region of human CEACAM1/5.
Target Name	CEACAM1/5
Other Names	CEACAM1; BGP; BGP1; Carcinoembryonic antigen-related cell adhesion molecule 1; Biliary glycoprotein 1; BGP-1; CD66a; CEACAM5; CEA; Carcinoembryonic antigen-related cell adhesion molecule 5; Carcinoembryonic antigen; CEA; Meconium antigen 100; CD66e
Accession No.	Swiss-Prot: P13688NCBI Gene ID: 634
SDS-PAGE MW	58kd
Concentration	1mg/ml
Formulation	Liquid in PBS containing 50% glycerol, 0.5% BSA and 0.02% sodium azide.
Storage	Store at -20°C/1 year

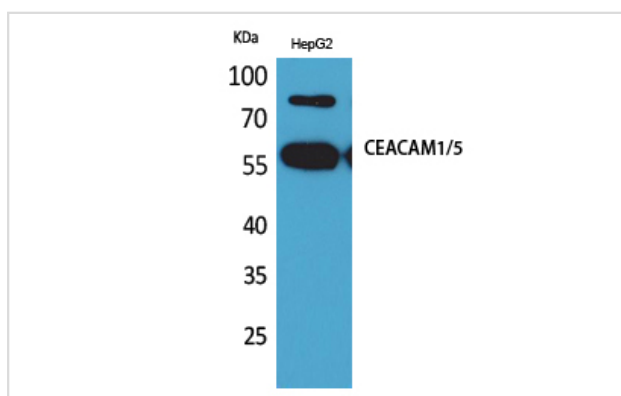
Application Details

Western Blot: 1/500 - 1/2000.

ELISA: 1/20000.

Not yet tested in other applications.

Images



Western Blot analysis of HepG2 cells using CEACAM1/5 Polyclonal Antibody

Note: This product is for in vitro research use only and is not intended for use in humans or animals.