

## FOXP1 Polyclonal Antibody

Catalog No: #41621



Package Size: #41621-1 50ul #41621-2 100ul

Orders: [order@signalwayantibody.com](mailto:order@signalwayantibody.com)Support: [tech@signalwayantibody.com](mailto:tech@signalwayantibody.com)

## Description

|                       |   |
|-----------------------|---|
| Product Name          | FOXP1 Polyclonal Antibody   |
| Host Species          | Rabbit  |
| Clonality             | Polyclonal  |
| Purification          | The antibody was affinity-purified from rabbit antiserum by affinity-chromatography using epitope-specific immunogen. |
| Applications          | WB ELISA  |
| Species Reactivity    | Human;Mouse;Rat   |
| Specificity           | FOXP1 Polyclonal Antibody detects endogenous levels of FOXP1 protein.   |
| Immunogen Type        | peptide   |
| Immunogen Description | Synthesized peptide derived from the C-terminal region of human FOXP1.  |
| Conjugates            | Unconjugated  |
| Target Name           | FOXP1   |
| Other Names           | FOXP1; HSPC215; Forkhead box protein P1   |
| Accession No.         | Swiss-Prot: Q9H334NCBI Gene ID: 27086   |
| SDS-PAGE MW           | 75kd  |
| Concentration         | 1mg/ml  |
| Formulation           | Liquid in PBS containing 50% glycerol, 0.5% BSA and 0.02% sodium azide.   |
| Storage               | Store at -20°C/1 year   |

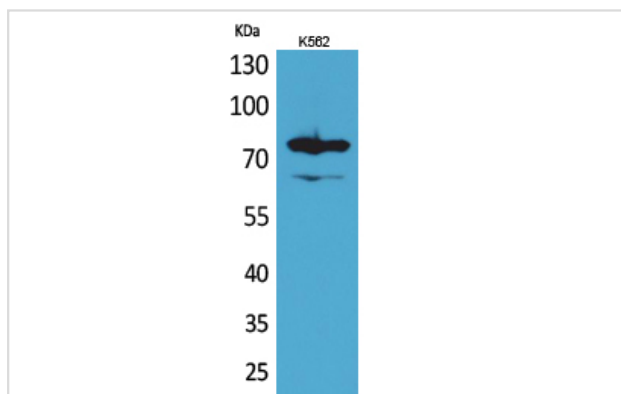
## Application Details

Western Blot: 1/500 - 1/2000.

ELISA: 1/20000.

Not yet tested in other applications.

## Images



Western Blot analysis of K562 cells using FOXP1 Polyclonal Antibody

---

Note: This product is for in vitro research use only and is not intended for use in humans or animals.