

CKR-4 Polyclonal Antibody

Catalog No: #41696



Package Size: #41696-1 50ul #41696-2 100ul

Orders: order@signalwayantibody.comSupport: tech@signalwayantibody.com

Description

Product Name	CKR-4 Polyclonal Antibody
Host Species	Rabbit
Clonality	Polyclonal
Purification	The antibody was affinity-purified from rabbit antiserum by affinity-chromatography using epitope-specific immunogen.
Applications	WB;IHC;IF;ELISA
Species Reactivity	Human;Mouse;Rat
Specificity	CKR-4 Polyclonal Antibody detects endogenous levels of CKR-4 protein.
Immunogen Type	peptide
Immunogen Description	Synthesized peptide derived from the N-terminal region of human CKR-4.
Conjugates	Unconjugated
Target Name	CKR-4
Other Names	CCR4; CMKBR4; C-C chemokine receptor type 4; C-C CKR-4; CC-CKR-4; CCR-4; CCR4; K5-5; CD194
Accession No.	Swiss-Prot: P51679NCBI Gene ID: 1233
SDS-PAGE MW	41kd
Concentration	1mg/ml
Formulation	Liquid in PBS containing 50% glycerol, 0.5% BSA and 0.02% sodium azide.
Storage	Store at -20°C/1 year

Application Details

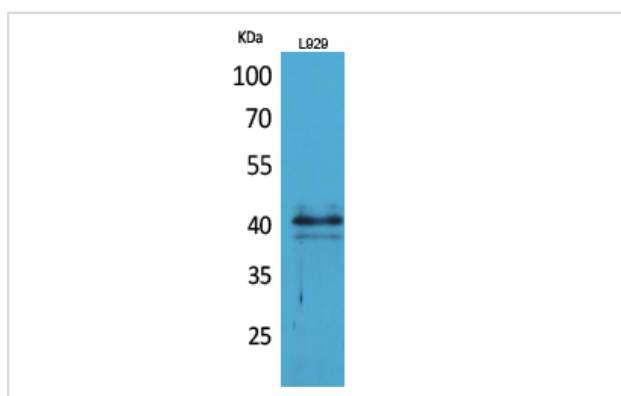
WB 1:500-1:2000;

IHC: 1:100-300;

IF 1:50-200;

ELISA 1:20000

Images



Western Blot analysis of L929 cells using CKR-4 Polyclonal Antibody

Note: This product is for in vitro research use only and is not intended for use in humans or animals.