

Lactoferrin Monoclonal Antibody

Catalog No: #44072



Package Size: #44072-1 50ul #44072-2 100ul

Orders: order@signalwayantibody.com

Support: tech@signalwayantibody.com

Description

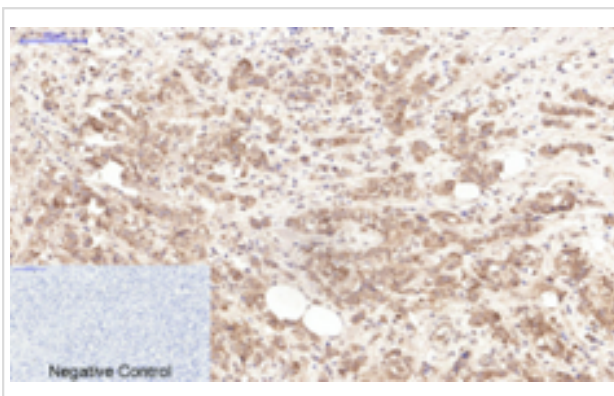
| | |
|-----------------------|---|
| Product Name | Lactoferrin Monoclonal Antibody |
| Host Species | Mouse |
| Clonality | Monoclonal |
| Applications | IF/ICC;IHC-p;ELISA |
| Species Reactivity | Human |
| Specificity | The antibody detects endogenous Lactoferrin protein. |
| Immunogen Description | Synthetic Peptide of Lactoferrin |
| Conjugates | Unconjugated |
| Other Names | LTF; LF; Lactotransferrin; Lactoferrin; Talalactoferrin |
| Accession No. | Swiss-Prot#: P02788 NCBI Gene ID:4057 |
| Calculated MW | 77 |
| Formulation | PBS, pH 7.4, containing 0.5%BSA, 0.02% sodium azide as Preservative and 50% Glycerol. |
| Storage | Store at -20°C/1 year |

Application Details

IHC 1:50-300

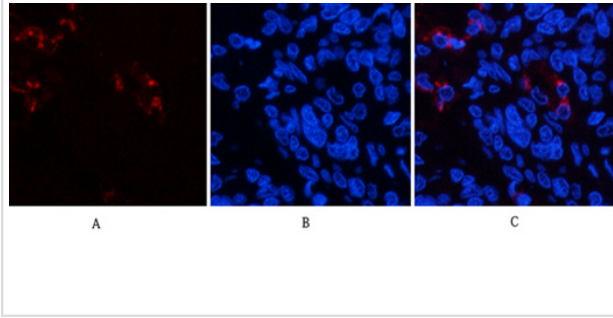
IF: 1:50-200 ELISA: 1:5000-10000

Images



Immunohistochemical analysis of paraffin-embedded Human-breast-cancer tissue.

Immunofluorescence analysis of human-lung-cancer tissue.



Published Papers

Hua Ying, Zhou Ziqi, Zhang Can, Fang Hai, Wu Mingxing, Chen Zhiyong, Ku Xin, Yan Wei et al., Proteomic portrait of degranulation program in human circulating neutrophils upon multi-inflammatory and infectious activation, *Molecular & cellular proteomics : MCP*, (2025)

[PMID:41033464](#)

Note: This product is for in vitro research use only and is not intended for use in humans or animals.