

S1-Tag Monoclonal Antibody(F321)

Catalog No: #44225

Package Size: #44225-1 50ul #44225-2 100ul

Orders: order@signalwayantibody.comSupport: tech@signalwayantibody.com

Description

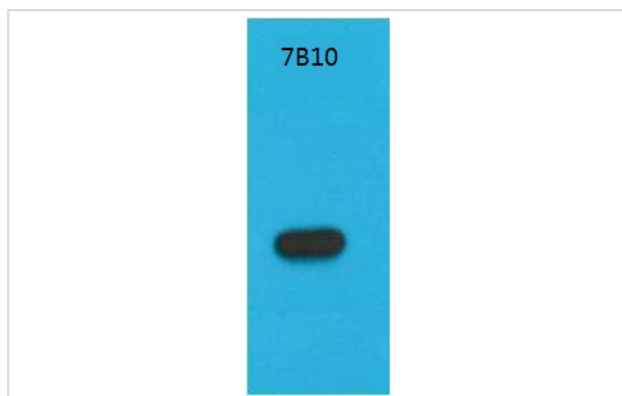
Product Name	S1-Tag Monoclonal Antibody(F321)
Host Species	Mouse
Clonality	Monoclonal
Clone No.	F321
Isotype	IgG1
Applications	WB IHC
Specificity	S1-TAG Monoclonal Antibody detects S1-TAG fusion protein.
Immunogen Type	Recombinant protein
Immunogen Description	Purified recombinant S1-TAG protein expressed in E.coli.
Target Name	S1-Tag
Concentration	1mg/ml
Formulation	Liquid in PBS containing 50% glycerol, 0.5% BSA and 0.02% sodium azide.
Storage	Store at -20°C/1 year

Application Details

Western blotting: 1:500-1:2000

Immunohistochemistry: 1:200-1:1000

Images



Western blot analysis of Recombinant S1-Tag Protein with S1-Tag Mouse mAb diluted at 1:5,000.

Note: This product is for in vitro research use only and is not intended for use in humans or animals.