

MAZ Polyclonal Antibody

Catalog No: #44263



Package Size: #44263-1 50ul #44263-2 100ul

Orders: order@signalwayantibody.comSupport: tech@signalwayantibody.com

Description

Product Name	MAZ Polyclonal Antibody
Host Species	Rabbit
Clonality	Polyclonal
Isotype	IgG
Purification	The antibody was affinity-purified from rabbit antiserum by affinity-chromatography using epitope-specific immunogen.
Applications	WB;ELISA;IHC
Species Reactivity	Human;Mouse;Rat
Specificity	MAZ Polyclonal Antibody detects endogenous levels of MAZ protein.
Immunogen Description	The antiserum was produced against synthesized peptide derived from human MAZ.
Conjugates	Unconjugated
Accession No.	Swiss Prot:P56270GeneID:4150
Calculated MW	48kD
Concentration	1 mg/ml
Formulation	Liquid in PBS containing 50% glycerol, 0.5% BSA and 0.02% sodium azide.
Storage	Store at -20°C/1 year

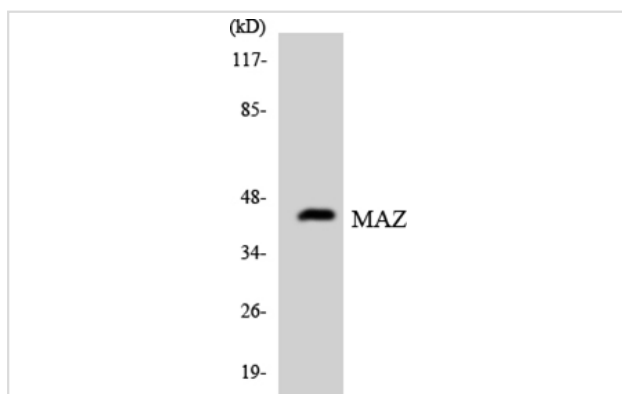
Application Details

WB 1:500-2000;

IHC-p 1:50-300;

ELISA 2000-20000

Images



Western blot analysis of the lysates from HepG2 cells using MAZ antibody.

Published Papers

Yanlu Xiong;Jie Lei;Miaomiao Wen;Yongfu Ma;Jinbo Zhao;Yahui Tian;Zitong Wan;Xiaoyan Li;Jianfei Zhu;Wenchen Wang;Xiaohong Ji;Ying Sun;Jie

Yang;Jiao Zhang;Shaowei Xin;Yang Liu;Lintao Jia;Yong Han;Tao Jiang et al., CENPF (+) cancer cells promote malignant progression of early-stage TP53 mutant lung adenocarcinoma., , (2025)

[PMID:40044674](#)

Note: This product is for in vitro research use only and is not intended for use in humans or animals.