

glut2 Antibody

Catalog No: #45050



Package Size: #45050-1 50ul #45050-2 100ul

Orders: order@signalwayantibody.com

Support: tech@signalwayantibody.com

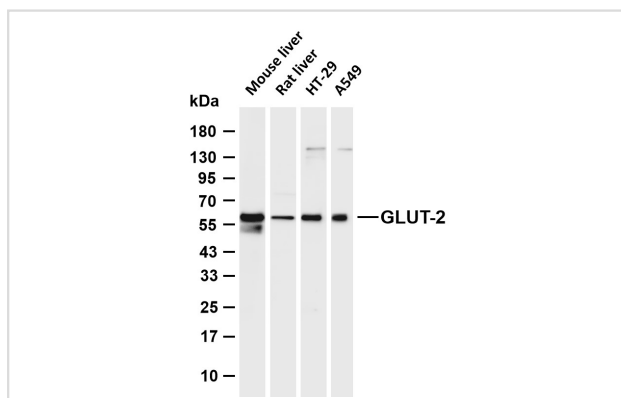
Description

Product Name	glut2 Antibody
Host Species	Rabbit
Clonality	Monoclonal
Purification	Protein A affinity chromatography
Applications	WB;IHC;IF;ELISA
Species Reactivity	Human;Mouse;Rat
Specificity	Endogenous
Conjugates	Unconjugated
Target Name	glut2
Other Names	glut2 Antibody
Accession No.	Swiss-Prot#: P11168 NCBI Gene ID:6514
Calculated MW	57 kDa
Concentration	0.2 mg/ml
Formulation	PBS, 50% glycerol, 0.05% Proclin 300, 0.05%BSA
Storage	Store at -20°C

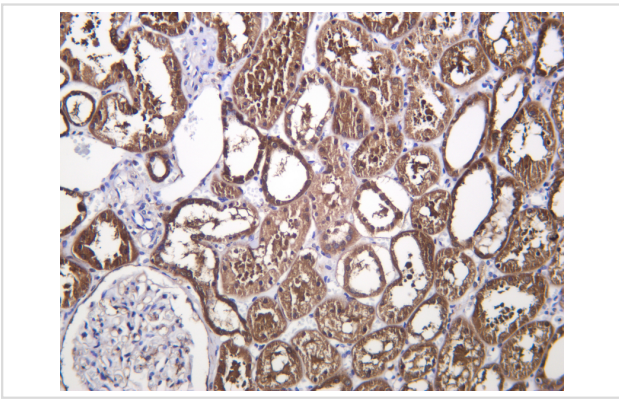
Application Details

WB 1:2000-1:10000; IHC 1:1000-1:400; IF 1:200-1:1000; ELISA 1:5000-1:20000

Images



Various whole cell lysates were separated by 4-20% SDS-PAGE, and the membrane was blotted with Glut2 Antibody; The HRP-conjugated Goat anti-Rabbit IgG (H + L) antibody was used to detect the antibody; Lane 1: Mouse liver; Lane 2: Rat liver; Lane 3: HT-29; Lane 4: A549



Human kidney was stained with Glut2 Antibody.

Published Papers

Yen Chih-Ching, Tsai Chung-Liang, Chang Gary, Ko Chi-Hua, Tu Min-Yu, Lan Ying-Wei, Chen Hsiaoβ • Ling, Chen Chuan-Mu et al., Kefir-derived exopolysaccharide ameliorates hyperglycemic control and beta cell integrity in a rat model of type 2 diabetes mellitus, *Nutrition & diabetes*, (2025)

[PMID:40830335](#)

Note: This product is for in vitro research use only and is not intended for use in humans or animals.