

CTNNAL1 Antibody

Catalog No: #46548

Package Size: #46548-1 50ul #46548-2 100ul

Orders: order@signalwayantibody.com

Support: tech@signalwayantibody.com

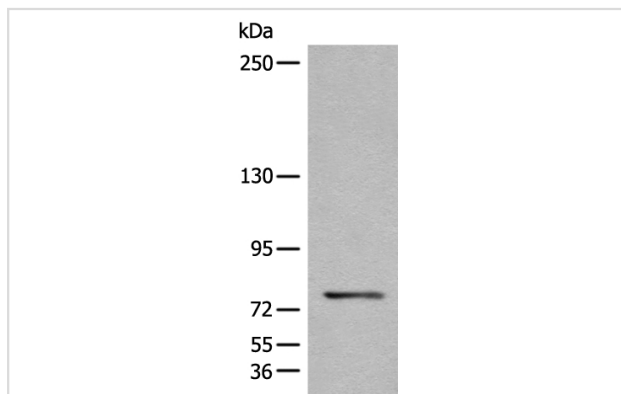
Description

Product Name	CTNNAL1 Antibody
Host Species	Rabbit
Clonality	Polyclonal
Purification	Antigen affinity purification
Applications	WB
Species Reactivity	Hu
Specificity	The antibody detects endogenous levels of total CTNNAL1 protein.
Immunogen Type	peptide
Immunogen Description	Synthetic protein corresponding to residues near the C terminal of human CTNNAL1
Target Name	CTNNAL1
Other Names	ACRP; CLLP; alpha-CATU
Accession No.	Swiss-Prot:Q9UBT7NCBI Gene ID:8727NCBI Protein:BC117208
Calculated MW	82 kDa
Concentration	3.4mg/ml
Formulation	Rabbit IgG in pH7.4 PBS, 0.05% NaN ₃ , 40% Glycerol.
Storage	Store at -20°C

Application Details

Western blotting: 1:200-1:1000

Images



Gel: 6%SDS-PAGE
 Lane: A431 cell lysate
 Primary antibody: 46548(CTNNAL1 Antibody) at dilution 1/500
 Secondary antibody: Goat anti rabbit IgG at 1/8000 dilution
 Exposure time: 1 minute

Background

CTNNAL1 (catenin (cadherin-associated protein), alpha-like 1), also known as CLLP or alpha-CATU, is a 734 amino acid cytoplasmic peripheral membrane protein belonging to the vinculin/alpha-catenin family. Expressed at high levels in adrenal gland and present at lower levels in neural tissues, CTNNAL1 may be involved in the regulation of Rho pathway signaling by providing a scaffold for the Lbc Rho guanine nucleotide exchange

factor 1 (RhoGEF p115). It is suggested that CTNNAL1 is down-regulated in pancreatic carcinoma undergoing differentiation and apoptosis. Existing as three isoforms produced by alternative splicing events, CTNNAL1 may contribute to the wound repair and proliferation of human bronchial epithelial cells (HBEC).

Note: This product is for in vitro research use only and is not intended for use in humans or animals.