

## USP12 Antibody

Catalog No: #46696



Package Size: #46696-1 50ul #46696-2 100ul

Orders: [order@signalwayantibody.com](mailto:order@signalwayantibody.com)Support: [tech@signalwayantibody.com](mailto:tech@signalwayantibody.com)

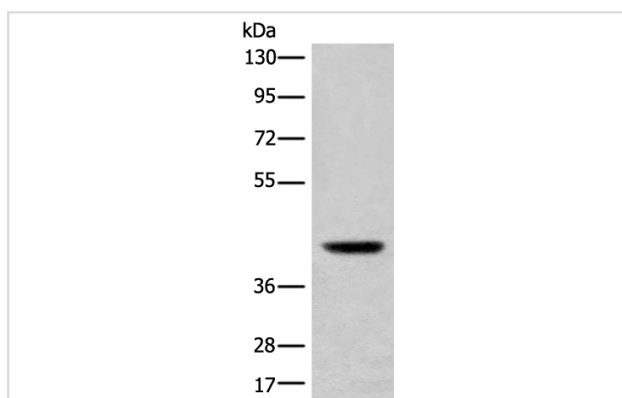
## Description

Product Name	USP12 Antibody
Host Species	Rabbit
Clonality	Polyclonal
Purification	Antigen affinity purification
Applications	WB IHC
Species Reactivity	Human;Mouse
Specificity	The antibody detects endogenous levels of total USP12 protein.
Immunogen Type	peptide
Immunogen Description	Fusion protein of human USP12
Conjugates	Unconjugated
Target Name	USP12
Other Names	UBH1; USP12L1
Accession No.	Swiss-Prot:O75317NCBI Gene ID:219333NCBI Protein:BC026072
Calculated MW	43 kDa
Concentration	0.6 mg/ml
Formulation	Rabbit IgG in pH7.4 PBS, 0.05% NaN <sub>3</sub> , 40% Glycerol.
Storage	Store at -20°C

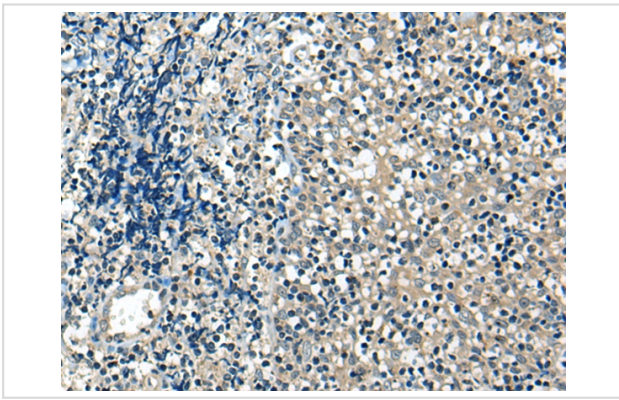
## Application Details

WB:1:1000 - 1:5000; IHC:1:25 - 1:100;

## Images



Gel: 8%SDS-PAGE  
 lysate: 40 B|Γ g, Lane: Mouse liver tissue lysate,  
 Primary antibody: 46696B£B`USP12 Antibody) at dilution  
 1/700  
 Secondary antibody: Goat anti rabbit IgG at 1/8000 dilution,  
 Exposure time: 1 second



The image on the left is immunohistochemistry of paraffin-embedded Human tonsil tissue using 46696(USP12 Antibody) at dilution 1/35, on the right is treated with fusion protein. (Original magnification: x200)

## Background

The ubiquitin (Ub) pathway involves three sequential enzymatic steps that facilitate the conjugation of Ub and Ub-like molecules to specific protein substrates. Through the use of a wide range of enzymes that can add or remove ubiquitin, the Ub pathway controls many intracellular processes such as signal transduction, transcriptional activation and cell cycle progression. USP12 (ubiquitin specific peptidase 12), also known as UBH1 or USP12L1, is a 370 amino acid protein belonging to the peptidase C19 family and the USP12/USP46 subfamily. Considered a deubiquitinating enzyme, it is suggested that USP12 has almost no deubiquitinating activity by itself and requires the interaction with WDR48 to have high activity. The gene encoding USP12 maps to human chromosome 13, which houses over 400 genes, such as BRCA2 and RB1, and comprises nearly 4% of the human genome.

Note: This product is for in vitro research use only and is not intended for use in humans or animals.