

## NOP56 Polyclonal Antibody

Catalog No: #46736



Package Size: #46736-1 50ul #46736-2 100ul

Orders: order@signalwayantibody.com

Support: tech@signalwayantibody.com

## Description

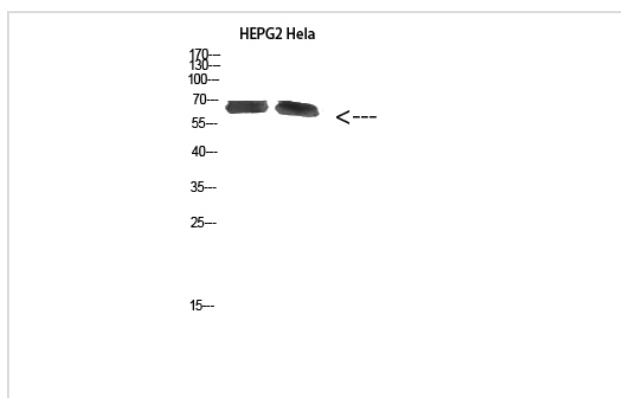
Product Name	NOP56 Polyclonal Antibody
Host Species	Rabbit
Clonality	Polyclonal
Purification	The antibody was affinity-purified from rabbit antiserum by affinity-chromatography using epitope-specific immunogen.
Applications	WB IHC
Species Reactivity	Human;Mouse;Rat
Specificity	NOP56 Polyclonal Antibody detects endogenous levels of NOP56
Immunogen Type	protein
Immunogen Description	Synthesized peptide derived from NOP56 at AA range: 191-240
Conjugates	Unconjugated
Target Name	NOP56
Other Names	Nucleolar protein 56 (Nucleolar protein 5A)
Accession No.	Swiss-Prot:O00567NCBI Gene ID:10528
Calculated MW	65 kDa
Concentration	1 mg/ml
Formulation	Liquid in PBS containing 50% glycerol, 0.5% BSA and 0.02% sodium azide.
Storage	Store at -20°C

## Application Details

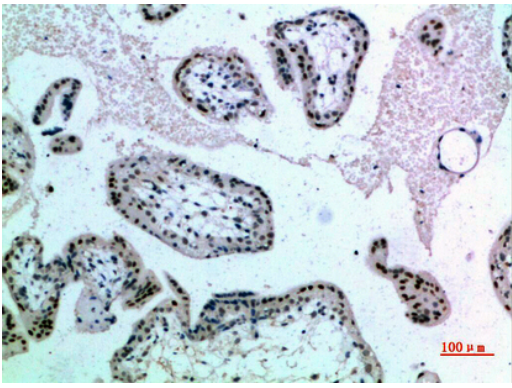
Western blotting: 1B£B1500-1B£B12000

Immunohistochemistry: IHC: 1:100-1:300

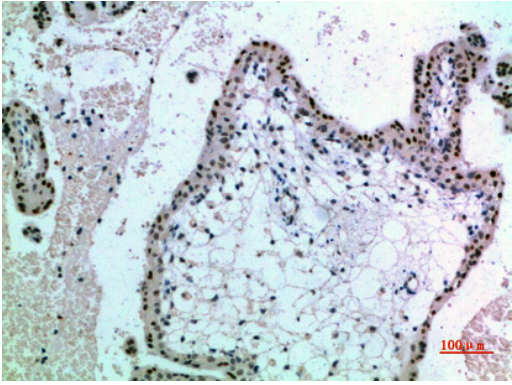
## Images



Western Blot analysis of HEPG2 HeLa cells using NOP56 Polyclonal Antibody diluted at 1:1000. Secondary antibody was diluted at 1:20000



Immunohistochemical analysis of paraffin-embedded human-placenta, antibody was diluted at 1:200



Immunohistochemical analysis of paraffin-embedded human-placenta, antibody was diluted at 1:200

---

Note: This product is for in vitro research use only and is not intended for use in humans or animals.