

## EPB41L4B Antibody

Catalog No: #47111

Package Size: #47111 100ul

Orders: order@signalwayantibody.com

Support: tech@signalwayantibody.com

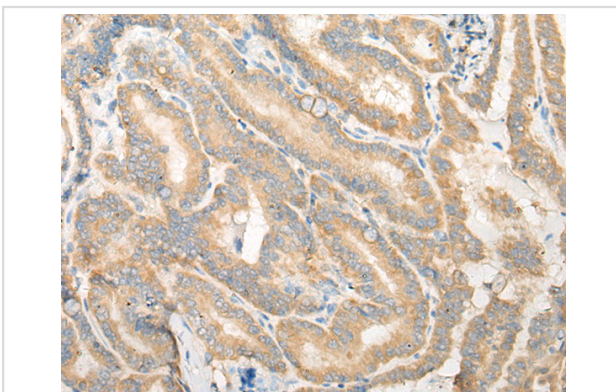
## Description

Product Name	EPB41L4B Antibody
Host Species	Rabbit
Clonality	Polyclonal
Purification	Antigen affinity purification
Applications	IHC
Species Reactivity	Human
Specificity	The antibody detects endogenous levels of total EPB41L4B protein.
Immunogen Type	peptide
Immunogen Description	Synthetic peptide of human EPB41L4B
Conjugates	Unconjugated
Target Name	EPB41L4B
Other Names	CG1; EHM2
Accession No.	Swiss-Prot#:Q9H329 NCBI Gene ID:54566 Gene Accssion:NP_061987
Concentration	1.4mg/ml
Formulation	Rabbit IgG in pH7.4 PBS, 0.05% NaN <sub>3</sub> , 40% Glycerol.
Storage	Store at -20C

## Application Details

Immunofluorescence: 1: 20-100

## Images



The image is immunohistochemistry of paraffin-embedded Human thyroid cancer tissue using 47111(EPB41L4B Antibody) at dilution 1/35. (Original magnification: ?00)

## Background

Up-regulates the activity of the Rho guanine nucleotide exchange factor ARHGEF18 (By similarity). Involved in the regulation of the circumferential actomyosin belt in epithelial cells (PubMed:22006950). Promotes cellular adhesion, migration and motility in vitro and may play a role in wound healing (PubMed:23664528). May have a role in mediating cytoskeletal changes associated with steroid-induced cell differentiation (PubMed:14521927).

---

Note: This product is for in vitro research use only and is not intended for use in humans or animals.