

Interleukin 6 Antibody

Catalog No: #48095



Package Size: #48095-1 50ul #48095-2 100ul

Orders: order@signalwayantibody.comSupport: tech@signalwayantibody.com

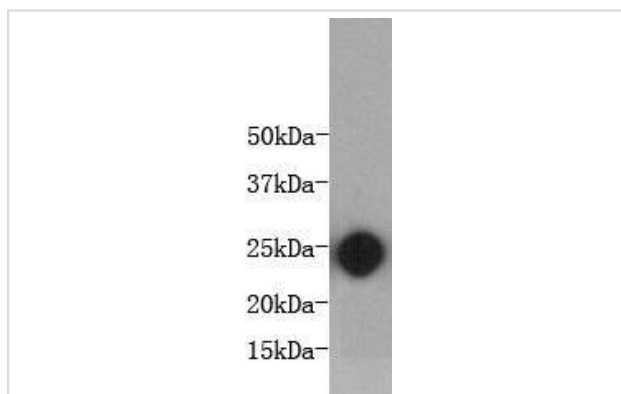
Description

Product Name	Interleukin 6 Antibody
Host Species	Mouse
Clonality	Monoclonal
Clone No.	3-A4
Purification	ProA affinity purified
Applications	WB, ICC, FC
Species Reactivity	Human
Immunogen Description	recombinant protein
Conjugates	Unconjugated
Other Names	Interleukin BSF 2 antibody B cell differentiation factor antibody B cell stimulatory factor 2 antibody B-cell stimulatory factor 2 antibody BSF 2 antibody BSF-2 antibody BSF2 antibody CDF antibody CTL differentiation factor antibody Hepatocyte stimulatory factor antibody HGF antibody HSF antibody Hybridoma growth factor antibody Hybridoma growth factor Interferon beta-2 antibody IFN-beta-2 antibody IFNB2 antibody IL 6 antibody IL-6 antibody IL6 antibody IL6_HUMAN antibody Interferon beta 2 antibody Interferon beta-2 antibody Interleukin 6 antibody Interleukin 6 (interferon beta 2) antibody Interleukin BSF 2 antibody Interleukin-6 antibody
Accession No.	Swiss-Prot#:P08505
Calculated MW	24kDa
Formulation	1*TBS (pH7.4), 1%BSA, 40%Glycerol. Preservative: 0.05% Sodium Azide.
Storage	Store at -20°C

Application Details

WB: 1:10,000 IP:1:1,000

Images



Western blot analysis on bioactive mouse IL-6 protein using anti-IL-6 Mouse mAb (Cat. # M1303-3).

Background

Interleukin 6 (IL-6) is a potent pleiotropic cytokine that regulates cell growth and differentiation of various tissues, and is known particularly for its role in the immune response and acute phase reactions. IL-6 is a cytokine with a wide variety of biological functions and belongs to the IL-6 superfamily. IL-6 is a potent inducer of the acute phase response and plays an essential role in the final differentiation of B-cells into Ig-secreting cells. Involved in lymphocyte and monocyte differentiation. This antibody can recognize mouse interleukin 6, which is a matched antibody-pair with product cat # M1303-1.

References

1."The murine Il-6 gene maps to the proximal region of chromosome 5."Mock B.A., Nordan R.P., Justice M.J., Kozak C., Jenkins N.A., Copeland N.G., Clark S.C., Wong G.G., Rudikoff S.J. Immunol. 142:1372-1376(1989) 2. "Genomic structure of the murine IL-6 gene. High degree conservation of potential regulatory sequences between mouse and human."Tanabe O., Akira S., Kamiya T., Wong G.G., Hirano T., Kishimoto T.J. Immunol. 141:3875-3881(1988)

Published Papers

Zhang Meiyu;Li Decai;Sun Liujuan;He Yu;Liu Qingqing;He Yi;Li Fang et al., Lactobacillus reuteri Alleviates Hyperoxia-Induced BPD by Activating IL-22/STAT3 Signaling Pathway in Neonatal Mice, , (2024)

PMID:

Note: This product is for in vitro research use only and is not intended for use in humans or animals.