

Cathepsin B Antibody

Catalog No: #48118



Package Size: #48118-1 50ul #48118-2 100ul

Orders: order@signalwayantibody.comSupport: tech@signalwayantibody.com

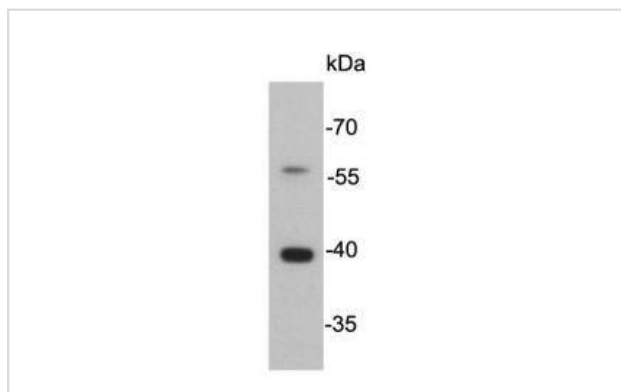
Description

Product Name	Cathepsin B Antibody
Host Species	Mouse
Clonality	Monoclonal
Clone No.	J11-A11
Purification	ProA affinity purified
Applications	WB, ICC, IHC
Species Reactivity	Hu, zebrafish
Immunogen Description	recombinant protein
Conjugates	Unconjugated
Other Names	Amyloid precursor protein secretase antibody APP secretase antibody APPS antibody CATB_HUMAN antibody Cathepsin B heavy chain antibody Cathepsin B1 antibody CathepsinB antibody CPSB antibody CTSB antibody cysteine protease antibody OTTHUMP00000116009 antibody OTTHUMP00000229510 antibody OTTHUMP00000229511 antibody OTTHUMP00000229512 antibody OTTHUMP00000229514 antibody OTTHUMP00000229515 antibody OTTHUMP00000229516 antibody Preprocathepsin B antibody
Accession No.	Swiss-Prot#:P07858
Calculated MW	38kDa
Formulation	1*TBS (pH7.4), 1%BSA, 40%Glycerol. Preservative: 0.05% Sodium Azide.
Storage	Store at -20°C

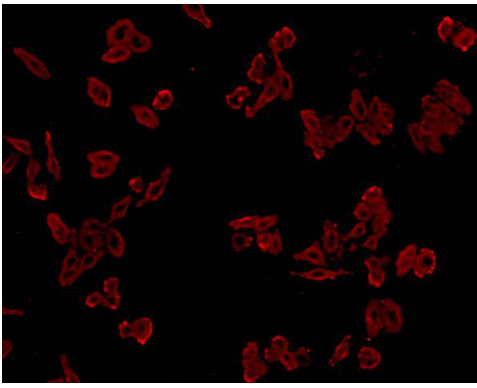
Application Details

WB: 1:5,000-1:10,000 ICC: 1:200-1:500

Images



Western blot analysis of Cathepsin B on SW480 cell lysate using anti-Cathepsin B antibody at 1/5,000 dilution.



ICC staining Cathepsin B in HepG2 cells (red). Cells were fixed in paraformaldehyde, permeabilised with 0.25% Triton X100/PBS.

Background

Cathepsin B is an enzymatic protein belonging to the peptidase (or protease) families. In humans, it is coded by the CTSB gene. A wide array of diseases results in elevated levels of cathepsin B, which causes numerous pathological processes including cell death, inflammation, and production of toxic peptides. Focusing on neurological diseases, cathepsin B gene knockout studies in an epileptic rodent model have shown cathepsin B causes a significant amount of the apoptotic cell death that occurs as a result of inducing epilepsy. Mutations in the CTSB gene have been linked to tropical pancreatitis, a form of chronic pancreatitis.

References

1. Tandon RK (January 2007). "Tropical pancreatitis". *J. Gastroenterol.* 42 (Suppl 17): 141β 7.
2. Klein, D.M.; Felsentein, K.M.; Brenneman, D.E. (2009). "Cathepsins B and L differentially regulate amyloid precursor protein processing". *J Pharmacol Exp Ther* 329 (3): 813β 21.
3. Kindy, M.S.; Yu, J.; Zhu, H.; El-Amouri, S.S.; Hook, V.; Hook, G.R. (2012). "Deletion of the Cathepsin B Gene Improves Memory Deficits in a Transgenic Alzheimer's Disease Mouse Model Expressing AbetaPP Containing the Wild-Type beta-Secretase Site Sequence". *J Alzheimers Dis* 29 (4): 827β 40.

Published Papers

el at., Coprophagy Prevention Decreases the Reproductive Performance and Granulosa Cell Apoptosis via Regulation of CTSB Gene in Rabbits. In *Front Physiol*
on 2022 Jul 18 by Guohua Song, Yadong Wang, et al.. PMID:35923240, (2022)
[PMID:35923240](https://pubmed.ncbi.nlm.nih.gov/35923240/)

Note: This product is for in vitro research use only and is not intended for use in humans or animals.