

CD166 Mouse mAb

Catalog No: #48272

Package Size: #48272-1 50ul #48272-2 100ul

Orders: order@signalwayantibody.com

Support: tech@signalwayantibody.com

Description

Product Name	CD166 Mouse mAb
Host Species	Mouse
Clone No.	7C2
Purification	ProA affinity purified
Applications	WB, IP, IF, IHC(P)
Species Reactivity	Human;Mouse;Rat
Immunogen Description	peptide
Conjugates	Unconjugated
Other Names	Activated leukocyte cell adhesion molecule antibody ALCAM antibody ALCAM protein antibody CD 166 antibody CD166 antibody CD166 antigen antibody CD166_HUMAN antibody FLJ3851 antibody FLJ38514 antibody MEMD antibody MGC71733 antibody
Accession No.	Swiss-Prot#:Q13740
Calculated MW	65 kDa
SDS-PAGE MW	100 kDa
Formulation	1*TBS (pH7.4), 1%BSA, 40%Glycerol. Preservative: 0.05% Sodium Azide.
Storage	Store at 4°C

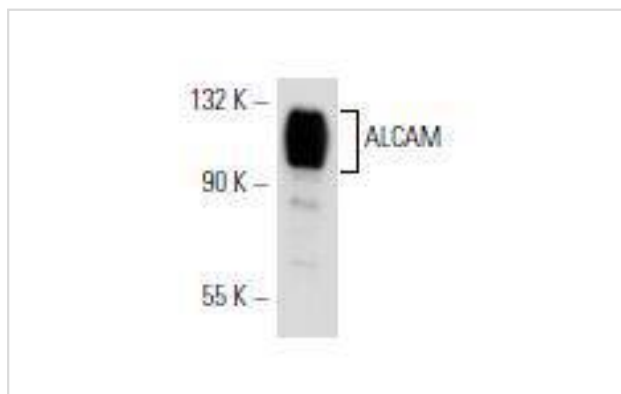
Application Details

WB: 1:100-1:1,000

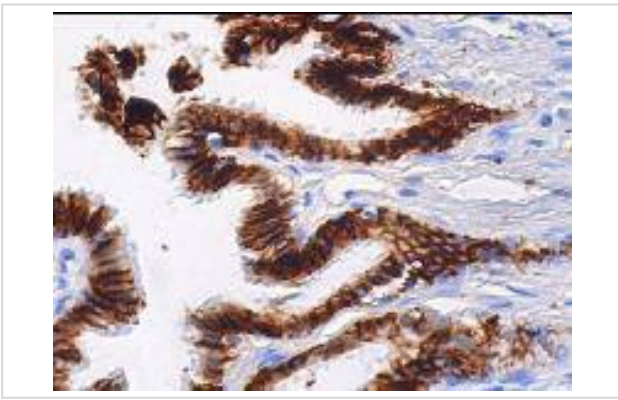
IHC: 1:50-500

IP: 1-2 µg per 100-500 µg of total protein(1 ml of cell lysate)

Images



Western blot analysis of ALCAM expression in SK-N-SH whole cell lysate.



Immunoperoxidase staining of formalin fixed, paraffin-embedded human bronchus tissue showing membrane staining of respiratory epithelial cells.

Background

Activated leukocyte cell adhesion molecule (ALCAM), expressed on activated leukocytes, T cells, B cells and monocytes, is a member of the immunoglobulin superfamily (IgSF) and identified as a CD6 ligand. CD6 is a type I membrane protein in the scavenger receptor cysteine rich protein superfamily that acts in T cell adhesion and costimulation. ALCAM mediates thymocyte-thymic epithelial cell adhesion via homophilic (ALCAM-ALCAM) and heterophilic (ALCAMCD6) interactions involving a previously undescribed protein-protein interaction between a member of the scavenger receptor cysteine rich protein superfamily and the immunoglobulin superfamily.

References

1. Bowen, M.A. and Aruffo, A. 1999. Adhesion molecules, their receptors and their regulation: analysis of CD6-activated leukocyte cell adhesion molecule (ALCAM/CD166) interactions. *Transplant Proc.* 31: 795-796.
2. Cortes, F., et al. 1999. HCA, an immunoglobulin-like adhesion molecule present on the earliest human hematopoietic precursor cells, is also expressed by stromal cells in blood-forming tissues. *Blood* 93: 826-837.

Note: This product is for in vitro research use only and is not intended for use in humans or animals.