

CD11b ITAM Antibody

Catalog No: #48279



Package Size: #48279-1 50ul #48279-2 100ul

Orders: order@signalwayantibody.com

Support: tech@signalwayantibody.com

Description

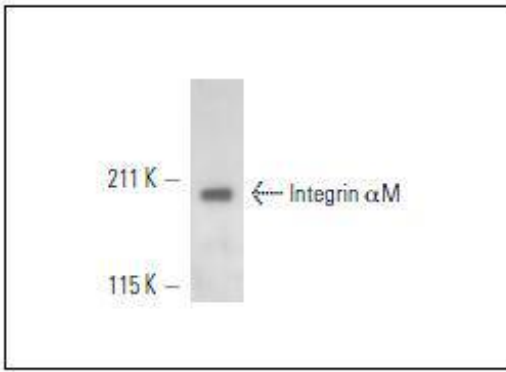
Product Name	CD11b ITAM Antibody
Host Species	Mouse
Clone No.	4G2
Purification	ProA affinity purified
Applications	IP, IF, FCM
Species Reactivity	Human;Mouse
Immunogen Description	peptide
Conjugates	Unconjugated
Other Names	antigen CD11b (p170) antibody Antigen CD11b p170 antibody CD11 antigen like family member B antibody CD11 antigen-like family member B antibody CD11b antibody CD11b/CD18 antibody CD49d antibody Cell surface glycoprotein MAC-1 subunit alpha antibody Complement component 3 receptor 3 subunit antibody Complement Component Receptor 3 Alpha antibody Complement receptor type 3, alpha subunit antibody CR 3 alpha chain (CR3A) antibody CR 3 alpha chain antibody CR-3 alpha chain antibody CR3 antibody CR3A antibody F730045J24Rik antibody Integrin Alpha M antibody Integrin alpha M chain antibody Integrin alpha-M antibody Integrin beta 2 alpha subunit antibody Integrin subunit alpha M antibody integrin, alpha M (complement component 3 receptor 3 subunit) antibody ITAM_HUMAN antibody ITGAM antibody Leukocyte adhesion receptor MO1 antibody Ly-40 antibody MAC 1 antibody Mac-1a antibody MAC1 antibody Mac1, alpha subunit antibody MAC1A antibody Macrophage antigen alpha polypeptide antibody MGC117044 antibody Mo1, alpha subunit antibody MO1A antibody Neutrophil adherence receptor alpha M subunit antibody Neutrophil adherence receptor antibody SLEB6 antibody
Accession No.	Swiss-Prot#:P11215
Calculated MW	170kDa
Formulation	1*TBS (pH7.4), 1%BSA, 40%Glycerol. Preservative: 0.05% Sodium Azide.
Storage	Store at -20°C

Application Details

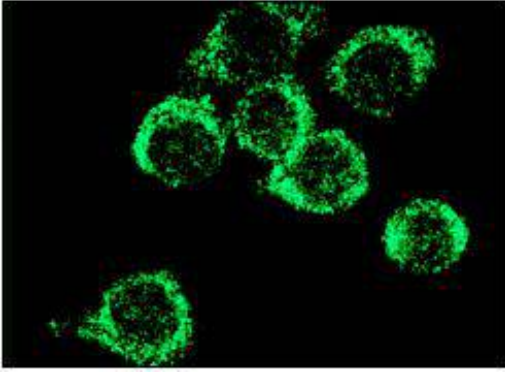
IF: 1:50-500

IP: 1-2 μ g per 100-500 μ g of total protein(1 ml of cell lysate)FC: 1 μ g per 1 x 10⁶ cells

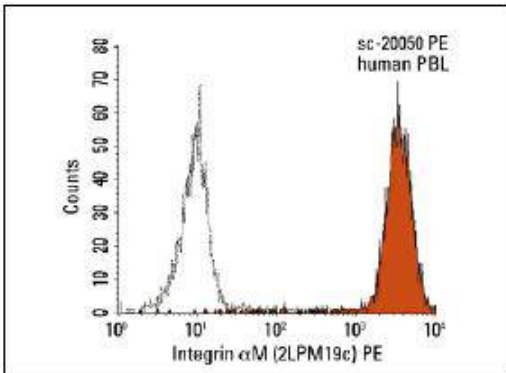
Images



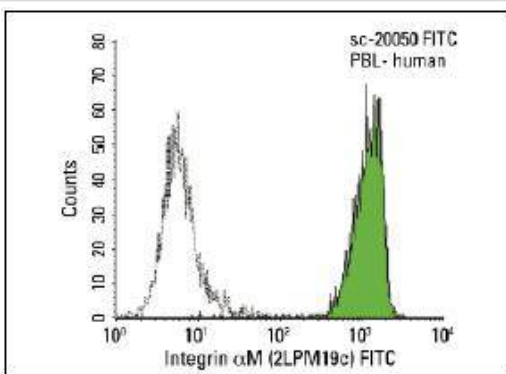
Western blot analysis of Integrin α M expression in human PBL whole cell lysate immunoprecipitated with Integrin α M (2LPM19c) and detected with Integrin α M (H-61).



Immunofluorescence staining of methanol-fixed RAW 264.7 cells showing membrane staining.



FCM analysis of human peripheral blood leukocytes. Black line histogram represents the isotype control, normal mouse IgG1.



FCM analysis of human peripheral blood leukocytes. Black line histogram represents the isotype control, normal mouse IgG1.

Background

Integrin α M, also designated complement component receptor-3 α , CD11b (p170), macrophage antigen a polypeptide, cell surface glycoprotein Mac-1 a subunit, MAC1A, MO1A and ITGAM) is a cell adhesion molecule that acts as a receptor for cell surface ligands such as intracellular adhesion molecules (ICAMs) or soluble ligands. Integrins are heterodimeric proteins that contain an α chain and β chain. Integrin α M combines with the Integrin β 2 to form a leukocyte-specific integrin referred to as macrophage receptor 1 (Mac-1), or inactivated-C3b (iC3b) receptor 3 (CR3). Integrin α M β 2 is important in the adherence of neutrophils and monocytes to stimulated endothelium, and also in the phagocytosis of complement coated particles.

References

1. Nueda, A., et al. 1995. Hematopoietic cell-type-dependent regulation of leukocyte integrin functional activity: CD11b and CD11c expression inhibits LFA-1-dependent aggregation of differentiated U937 cells. *Cell. Immunol.* 164: 163-169.
2. Li, R., et al. 1995. A peptide derived from the intercellular adhesion molecule-2 regulates the avidity of the leukocyte Integrins CD11b/CD18 and CD11c/CD18. *J. Cell Biol.* 129: 1143-115
- 3.

Note: This product is for in vitro research use only and is not intended for use in humans or animals.