

HER4 / ErbB4 Antibody

Catalog No: #48301



Package Size: #48301-1 50ul #48301-2 100ul

Orders: order@signalwayantibody.comSupport: tech@signalwayantibody.com

Description

Product Name	HER4 / ErbB4 Antibody
Host Species	Mouse
Clone No.	4G19
Purification	ProA affinity purified
Applications	WB, IP, IF, IHC(P), FCM
Species Reactivity	Human;Mouse;Rat
Immunogen Description	Amino acids 1280-1308 at C-terminus of ErbB-4 of human origin.
Conjugates	Unconjugated
Other Names	4ICD antibody ALS19 antibody Avian erythroblastic leukemia viral oncogene homolog 4 antibody Avian erythroblastic leukemia viral v erb b2 oncogene homolog 4 antibody E4ICD antibody EC 2.7.10.1 antibody ErbB4 antibody ERBB4 intracellular domain antibody ERBB4_HUMAN antibody HER 4 antibody HER4 antibody human epidermal growth factor receptor 4 antibody Mer4 antibody MGC138404 antibody Oncogene ERBB4 antibody p180erbB4 antibody Proto-oncogene-like protein c-ErbB-4 antibody Receptor protein tyrosine kinase erbB 4 precursor antibody Receptor tyrosine protein kinase erbB 4 antibody s80HER4 antibody Tyrosine kinase type cell surface receptor HER4 antibody Tyrosine kinase-type cell surface receptor HER4 antibody v erb a avian erythroblastic leukemia viral oncogene homolog like 4 antibody v erb a erythroblastic leukemia viral oncogene homolog 4 antibody v-erb-a erythroblastic leukemia viral oncogene homolog 4 (avian) antibody V-ERB-B2 avian erythroblastic leukemia viral oncogene homolog 4 antibody Verba avian erythroblastic leukemia viral oncogene homolog like 4 antibody Verba erythroblastic leukemia viral oncogene homolog 4 antibody VERBB2 antibody
Accession No.	Swiss-Prot#:Q15303
Calculated MW	180kDa
Formulation	1*TBS (pH7.4), 1%BSA, 40%Glycerol. Preservative: 0.05% Sodium Azide.
Storage	Store at 4°C

Application Details

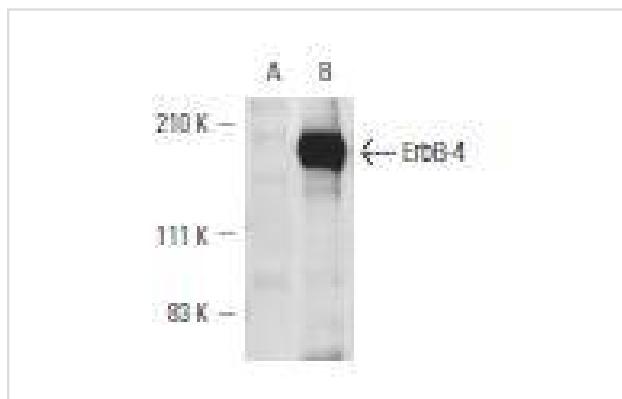
WB: 1:100-1:1,000

IHC: 1:50-500

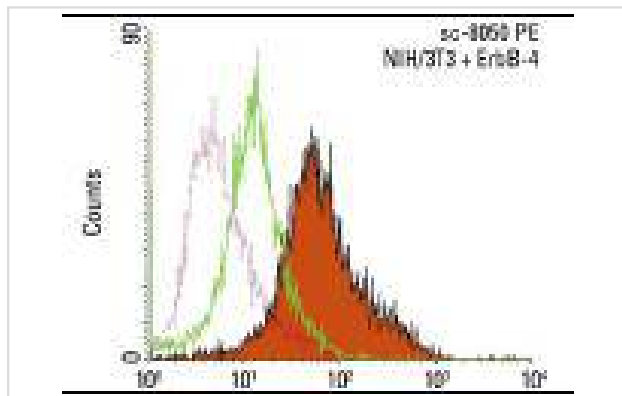
IP: 1-2 &mu;g per 100-500 &mu;g of total protein(1 ml of cell lysate)

FC: 1 μg per 1 x 10⁶ cells

Images



Western blot analysis of ErbB-4 expression in control (A) and ErbB-4 transfected (B) NIH/3T3 whole cell lysates.



Intracellular FCM analysis of fixed and permeabilized control (green line histogram) and ErbB-4 transfected (solid orange histogram) NIH/3T3 cells. Dotted pink histogram represents the isotype control, normal mouse IgG2a.

Background

The EGF receptor family comprises several related receptor tyrosine kinases that are frequently overexpressed in a variety of carcinomas. Members of this receptor family include EGFR (HER1), Neu (ErbB-2, HER2), ErbB-3 (HER3) and ErbB-4 (HER4), which form either homodimers or heterodimers upon ligand binding. The gene encoding ErbB-4 is expressed as a full length protein, which produces a short membrane-anchored cytoplasmic domain fragment and a long ectodomain fragment. The short fragment is heavily tyrosine phosphorylated and possesses tyrosine kinase catalytic activity toward an exogenous substrate. Proteolytic cleavage of ErbB-4 is promoted by the binding of heregulin. ErbB-4 is involved in cell proliferation and differentiation and its expression is highest in breast carcinoma cell lines, normal skeletal muscle, heart, pituitary, brain and cerebellum.

References

1. Gilmore-Hebert, M., et al. 2010. Interactions of ErbB4 and Kap1 connect the growth factor and DNA damage response pathways. *Mol. Cancer Res.* 8: 1388-1398.
2. Woo, R.S., et al. 2011. Expression of ErbB4 in the neurons of Alzheimer's disease brain and APP/PS1 mice, a model of Alzheimer's disease. *Anat. Cell Biol.* 44: 116-127.

Note: This product is for in vitro research use only and is not intended for use in humans or animals.