

IL17 Antibody

Catalog No: #48308

Package Size: #48308-1 50ul #48308-2 100ul

Orders: order@signalwayantibody.comSupport: tech@signalwayantibody.com

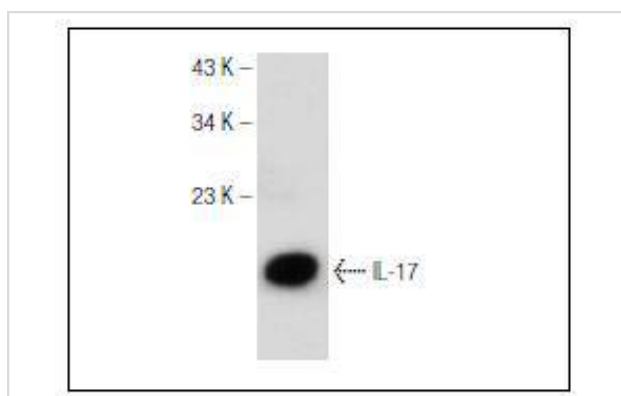
Description

Product Name	IL17 Antibody
Host Species	Mouse
Clone No.	4G2
Purification	ProA affinity purified
Applications	WB
Species Reactivity	Human
Immunogen Description	peptide
Conjugates	Unconjugated
Other Names	CTLA 8 antibody;CTLA-8 antibody; CTLA8 antibody;Cytotoxic T lymphocyte associated antigen 8 antibody;Cytotoxic T lymphocyte associated protein 8 antibody;Cytotoxic T lymphocyte associated serine esterase 8 antibody;Cytotoxic T-lymphocyte-associated antigen 8 antibody;IL 17A antibody;IL-17 antibody;IL-17A antibody; IL17 antibody;IL17_HUMAN antibody; Il17a antibody;Interleukin 17 (cytotoxic T lymphocyte associated serine esterase 8) antibody; Interleukin 17A antibody; Interleukin-17A antibody; Interleukin17 antibody; Interleukin17A antibody; OTTHUMP00000016597 antibody; OTTMUSP00000046003 antibody
Accession No.	Swiss-Prot#:Q16552
Calculated MW	15kDa
Formulation	1*TBS (pH7.4), 1%BSA, 40%Glycerol. Preservative: 0.05% Sodium Azide.
Storage	Store at -20°C

Application Details

WB: 1:100-1:1000

Images



Western blot analysis of human recombinant IL-17.

Background

Cytokines are small, soluble proteins with pleiotropic effects on a variety of cell types. Cytokines have a regulatory function over the immune system and mediate aspects of inflammatory response. They exert their biological effects through the binding of membrane-bound receptors which, in turn, initiate signal transduction cascades and elicit physiological changes in their target cell. Interleukin-17 (IL-17) and its cognate receptor, IL-17R, are an example of such a cytokine receptor pair. Originally identified as a rodent cDNA termed CTLA8, IL-17 is capable of inducing the secretion of IL-6 and IL-8 and augmenting the expression of ICAM-1 in human fibroblast cultures. The IL-17 protein exhibits a striking degree of homology with the HSV13 protein which mimics its function. The IL-17 receptor is a type I transmembrane protein 864 amino acids in length, that is highly expressed in spleen and kidney.

References

1. Yao, Z., et al. 1996. Complete nucleotide sequence of the mouse CTLA8 gene. *Gene*. 168: 223-225.
2. Ihle, J.N. 1996. Janus kinases in cytokine signalling. *Philos. Trans. R. Soc. Lond., B, Biol. Sci.* 351: 159-166.
3. Cohen, M.C., et al. 1996. Cytokine function: a study in biologic diversity. *Amer. J. Clin. Pathol.* 105: 589-598.

Note: This product is for in vitro research use only and is not intended for use in humans or animals.