

MSY2 Antibody

Catalog No: #48365

Package Size: #48365-1 50ul #48365-2 100ul

Orders: order@signalwayantibody.comSupport: tech@signalwayantibody.com

Description

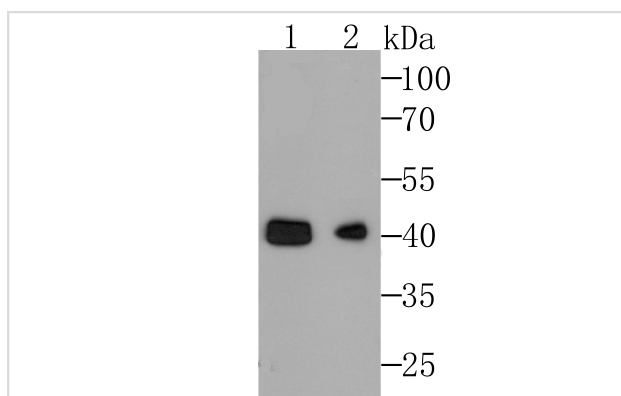
Product Name	MSY2 Antibody
Host Species	Mouse
Clone No.	A2-B9-G6
Purification	ProG affinity purified
Applications	WB,IHC
Species Reactivity	Human;Mouse;Rat
Immunogen Description	Peptide.
Conjugates	Unconjugated
Other Names	Contrin antibody CSDA 3 antibody CSDA3 antibody Dbpc antibody DNA binding protein C antibody DNA-binding protein C antibody FRGY2 homolog antibody Germ cell specific Y box binding protein antibody Germ cell-specific Y-box-binding protein antibody MGC118270 antibody MGC45104 antibody MSY 2 antibody MSY2 antibody MSY2 homolog antibody OTTMUSP00000006276 antibody RGD1305068 antibody Y box binding protein 2 antibody Y-box-binding protein 2 antibody YBOX2_HUMAN antibody YBX 2 antibody YBX2 antibody
Accession No.	Swiss-Prot#:Q9Y2T7
Calculated MW	38.5 kDa
Formulation	1*TBS (pH7.4), 0.5%BSA, 50%Glycerol. Preservative: 0.05% Sodium Azide.
Storage	Store at 4°C

Application Details

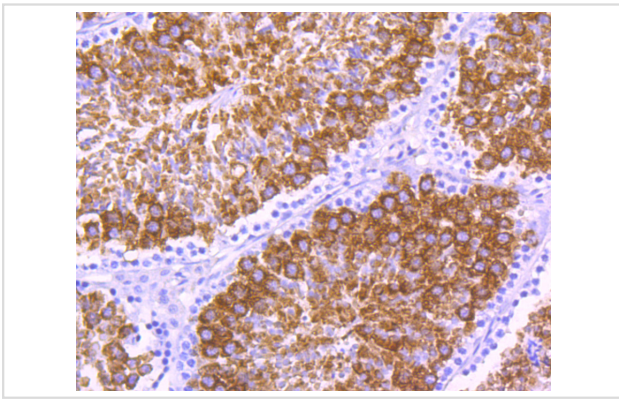
WB: 1:500-1:2,000

IHC: 1:50-1:200

Images



Western blot analysis of MSY2 on MCF-7 cell (1) and mouse testis tissue lysate using anti-MSY2 antibody at 1/1,000 dilution.



Immunohistochemical analysis of paraffin-embedded mouse testis tissue using anti-MSY2 antibody. Counter stained with hematoxylin.

Background

Major constituent of messenger ribonucleoprotein particles (mRNPs). Involved in the regulation of the stability and/or translation of germ cell mRNAs. Binds to Y-box consensus promoter element. Binds to full-length mRNA with high affinity in a sequence-independent manner. Binds to short RNA sequences containing the consensus site 5'-UCCAUCA-3' with low affinity and limited sequence specificity. Its binding with maternal mRNAs is necessary for its cytoplasmic retention. May mark specific mRNAs (those transcribed from Y-box promoters) in the nucleus for cytoplasmic storage, thereby linking transcription and mRNA storage/translational delay.

References

1. Frye B.C. et al. Y-box protein-1 is actively secreted through a non-classical pathway and acts as an extracellular mitogen. *EMBO Rep.* 10:783-789 (2009).
2. Chattopadhyay R. et al. Regulatory role of human AP-endonuclease (APE1/Ref-1) in YB-1-mediated activation of the multidrug resistance gene MDR1. *Mol. Cell. Biol.* 28:7066-7080 (2008).

Note: This product is for in vitro research use only and is not intended for use in humans or animals.