

PLCG1 Antibody

Catalog No: #48404

Package Size: #48404-1 50ul #48404-2 100ul

Orders: order@signalwayantibody.com

Support: tech@signalwayantibody.com

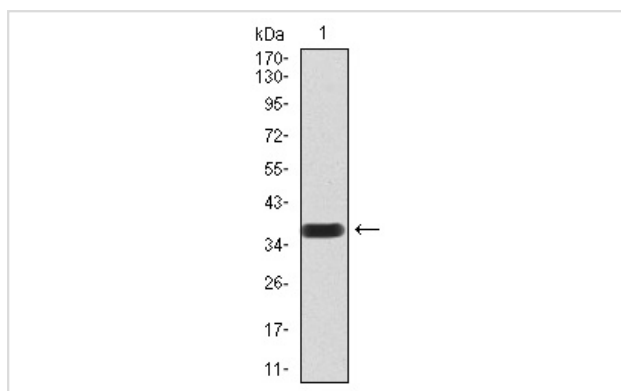
Description

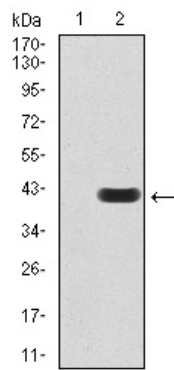
Product Name	PLCG1 Antibody
Host Species	Mouse
Clonality	Monoclonal
Clone No.	D11-C2
Purification	ProA affinity purified
Applications	WB, ICC, IHC, FC
Species Reactivity	Hu, Rt, Monkey
Immunogen Description	Recombinant protein
Conjugates	Unconjugated
Other Names	1 phosphatidyl D myo inositol 4 5 bisphosphate antibody 1 phosphatidylinositol 4 5 bisphosphate phosphodiesterase gamma 1 antibody 1-phosphatidylinositol-4,5-bisphosphate phosphodiesterase gamma-1 antibody Inositoltrisphosphohydrolase antibody Monophosphatidylinositol phosphodiesterase antibody NCKAP3 antibody Phosphatidylinositol phospholipase C antibody Phosphoinositidase C antibody Phosphoinositide phospholipase C antibody Phosphoinositide phospholipase C-gamma-1 antibody Phospholipase C 148 antibody Phospholipase C gamma 1 antibody Phospholipase C-gamma-1 antibody Phospholipase C-II antibody PLC gamma 1 antibody PLC II antibody PLC-148 antibody PLC-gamma-1 antibody PLC-II antibody PLC1 antibody PLC148 antibody Plcg1 antibody PLCG1_HUMAN antibody PLCgamma1 antibody
Accession No.	Swiss-Prot#:P19174
Calculated MW	148 kDa
Formulation	1*TBS (pH7.4), 1%BSA, 40%Glycerol. Preservative: 0.05% Sodium Azide.
Storage	Store at -20°C

Application Details

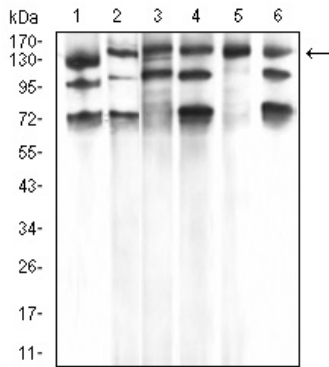
WB: 1:500-1:2,000 IHC: 1:50-1:200 ICC: 1:50-1:200 FC: 1:100-1:200

Images

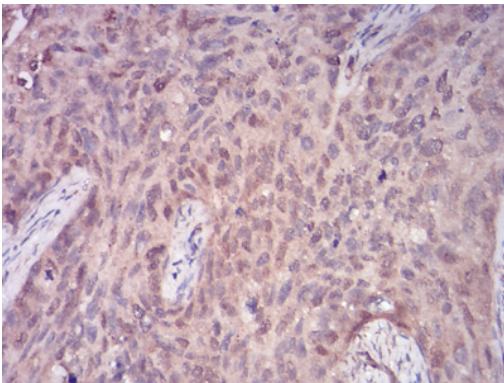




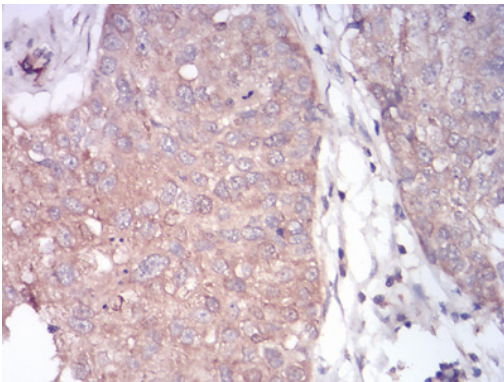
Western blot analysis of PLCG1 on HEK293 (1) and PLCG1-hlgGfc transfected HEK293 (2) cell lysate using anti-PLCG1 antibody at 1/1,000 dilution.



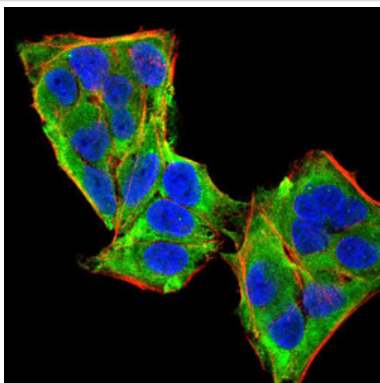
Western blot analysis of PLCG1 on different cell lysate using anti-PLCG1 antibody at 1/1,000 dilution. Positive control $\Omega\frac{1}{2}\alpha\Omega\frac{1}{2}$ Line1: Hela Line2: A431 Line3: C6 Line4: NIH/3T3 Line5: COS7 Line6: HCT116



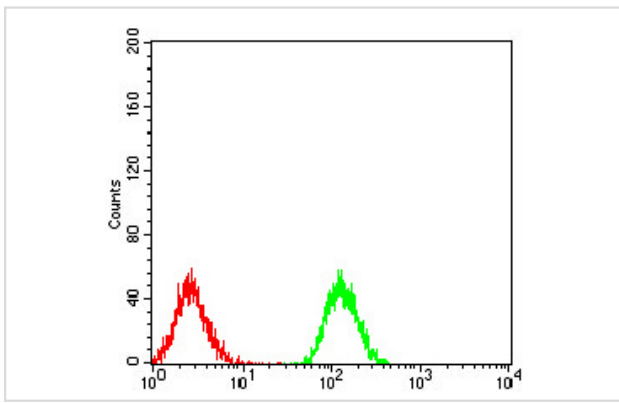
Immunohistochemical analysis of paraffin-embedded human cervical cancer tissues using anti-PLCG1 antibody. Counter stained with hematoxylin.



Immunohistochemical analysis of paraffin-embedded human bladder cancer tissues using anti-PLCG1 antibody. Counter stained with hematoxylin.



ICC staining PLCG1 (green) and Actin filaments (red) in Hela cells. The nuclear counter stain is DAPI (blue). Cells were fixed in paraformaldehyde, permeabilised with 0.25% Triton X100/PBS.



Flow cytometric analysis of Jurkat cells with PLCG1 antibody at 1/100 dilution (green) compared with an unlabelled control (cells without incubation with primary antibody; red).

Background

Phospholipase C-gamma 1 (PLC g1) is an isozyme of the phosphoinositide-specific PLC family, which occupies a central role in hormonal signal transduction pathways and is a substrate for the epidermal growth factor receptor tyrosine kinase. Following activation of TrkB, PLC g1 is phosphorylated on Tyrosine 783, Tyrosine 771 and Tyrosine 1253. Tyrosine 783 lies just downstream of the kinase domain in a relatively short sequence motif characteristic of the Trk family of protein-tyrosine kinase receptors. The sequence around Tyrosine 783 fits a consensus sequence for binding PLC g1. PLC g1 also forms a complex with TrkB consistent with the possibility that one of the TrkB autophosphorylation sites provides a binding site for the PLC g1 SH2 domains, as is the case for other receptor protein-tyrosine kinases.

References

1. Gao G ?et al.?Periodic mechanical stress induces the extracellular matrix expression and migration of rat nucleus pulposus cells by upregulating the expression of intergrin a1 and phosphorylation of downstream phospholipase Cγ1.?Mol Med Rep?14:2457-64 (2016).
2. Verhaar AP ?et al.?Superantigen-induced steroid resistance depends on activation of phospholipase C?2.?J Immunol?190:6589-95 (2013).?

Published Papers

el at., Pyroptosis: a novel signature to predict prognosis and immunotherapy response in gliomas. In Hum Cell on 2022 Nov by Guiying He, Zhimin Chen, et al..PMID:36129672, , (2022)

[PMID:36129672](https://pubmed.ncbi.nlm.nih.gov/36129672/)

Note: This product is for in vitro research use only and is not intended for use in humans or animals.