

IL1RAPL1 Antibody

Catalog No: #48423



Package Size: #48423-1 50ul #48423-2 100ul

Orders: order@signalwayantibody.comSupport: tech@signalwayantibody.com

Description

Product Name	IL1RAPL1 Antibody
Host Species	Mouse
Purification	ProA affinity purified
Applications	WB, ICC, FC
Species Reactivity	Hu
Immunogen Description	Recombinant protein
Other Names	IL 1 RAPL 1 antibody IL 1RAPL 1 antibody IL-1-RAPL-1 antibody IL-1RAPL-1 antibody IL1R8 antibody IL1RAPL 1 antibody IL1RAPL antibody IL1RAPL-1 antibody IL1RAPL1 antibody Interleukin 1 receptor 8 antibody Interleukin 1 receptor accessory protein like 1 antibody Interleukin-1 receptor accessory protein-like 1 antibody IRPL1_HUMAN antibody Mental retardation X linked 10 antibody Mental retardation X linked 21 antibody Mental retardation X linked 34 antibody MRX 21 antibody MRX 34 antibody MRX10 antibody MRX21 antibody MRX34 antibody Oligophrenin 4 antibody Oligophrenin-4 antibody Oligophrenin4 antibody OPHN 4 antibody OPHN4 antibody Three immunoglobulin domain containing IL 1 receptor related 2 antibody Three immunoglobulin domain-containing IL-1 receptor-related 2 antibody TIGIRR 2 antibody TIGIRR-2 antibody TIGIRR2 antibody X linked interleukin 1 receptor accessory protein like 1 antibody X-linked interleukin-1 receptor accessory protein-like 1 antibody
Accession No.	Swiss-Prot#:Q9NZN1
Calculated MW	80 kDa
Concentration	2.0 ug/ul
Formulation	Purified antibody in PBS with 0.05% sodium azide.
Storage	Store at 4Λ C short term. Aliquot and store at -20Λ C long term. Avoid freeze/thaw cycles.

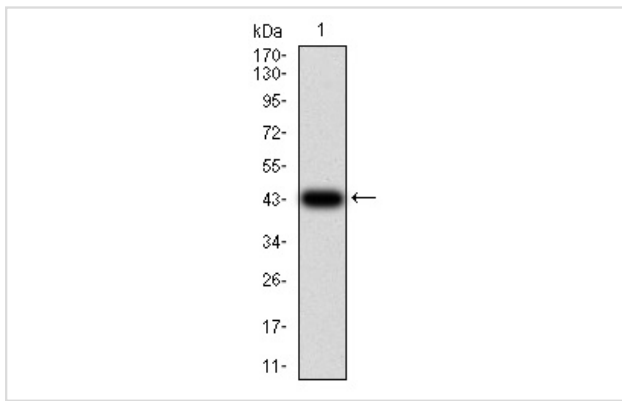
Application Details

WB: 1:500-1:2,000

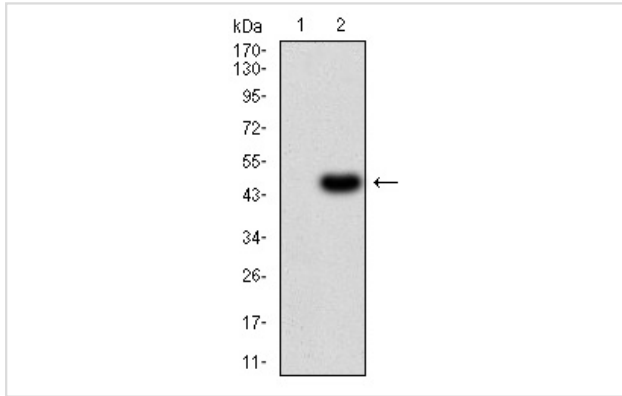
ICC: 1:50-1:200

FC: 1:100-1:200

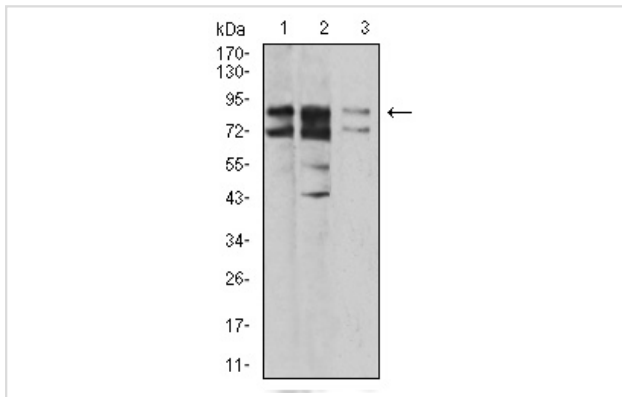
Images



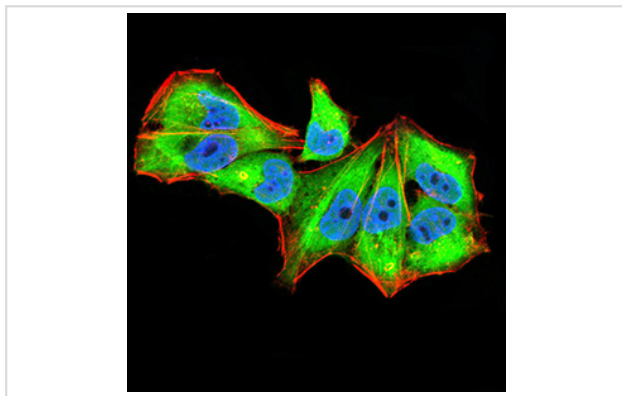
Western blot analysis of IL1RAPL1 on ?human IL1RAPL1 recombinant protein using anti-IL1RAPL1 antibody at 1/1,000 dilution.



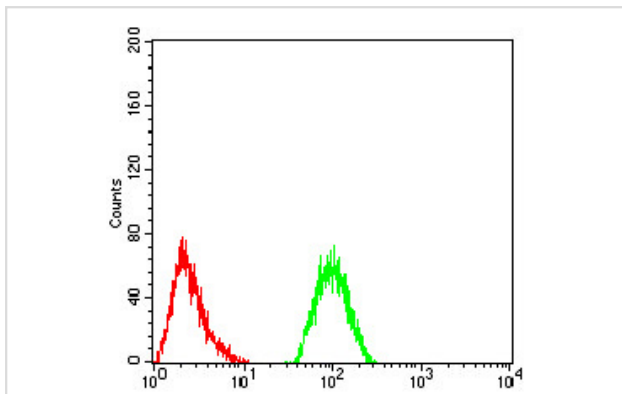
Western blot analysis of IL1RAPL1 on HEK293 (1) and IL1RAPL1-hlgGfc transfected HEK293 (2) cell lysate using anti-IL1RAPL1 antibody at 1/1,000 dilution.



Western blot analysis of IL1RAPL1 on different cell lysate using anti-IL1RAPL1 antibody at 1/1,000 dilution. Positive control. Lane1: A431 Lane2: SK-Hep-1 Lane3: HL-7702



ICC staining IL1RAPL1 (green) and Actin filaments (red) in HeLa cells. The nuclear counter stain is DAPI (blue). Cells were fixed in paraformaldehyde, permeabilised with 0.25% Triton X100/PBS.



Flow cytometric analysis of HeLa cells with IL1RAPL1 antibody at 1/100 dilution (green) compared with an unlabelled control (cells without incubation with primary antibody; red).

Background

May regulate secretion and presynaptic differentiation through inhibition of the activity of N-type voltage-gated calcium channel. May activate the MAP kinase JNK. The protein encoded by this gene is a member of the interleukin 1 receptor family and is similar to the interleukin 1 accessory proteins. It is most closely related to interleukin 1 receptor accessory protein-like 2 (IL1RAPL2). This gene and IL1RAPL2 are located at a region on chromosome X that is associated with X-linked non-syndromic mental retardation. Deletions and mutations in this gene were found in patients with mental retardation. This gene is expressed at a high level in post-natal brain structures involved in the hippocampal memory system, which suggests a specialized role in the physiological processes underlying memory and learning abilities.

References

1. Montani C et al. The X-Linked Intellectual Disability Protein?IL1RAPL1?Regulates Dendrite Complexity. *J Neurosci* 37(28):6606-6627 (2017).
2. Laino L et al. Clinical and molecular characterization of a boy with intellectual disability, facial dysmorphism, minor digital anomalies and a complex?IL1RAPL1?intragenic rearrangement. *Eur J Paediatr Neurol* 20(6):971-976 (2015).

Note: This product is for in vitro research use only and is not intended for use in humans or animals.