

sfGFP Antibody

Catalog No: #48545

Package Size: #48545-1 50ul #48545-2 100ul

Orders: order@signalwayantibody.comSupport: tech@signalwayantibody.com

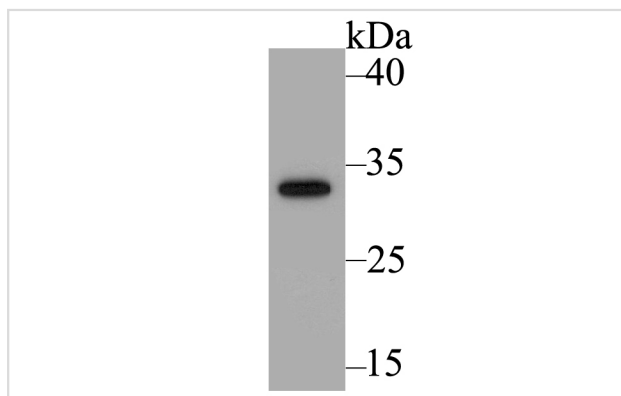
Description

| | |
|-----------------------|---|
| Product Name | sfGFP Antibody |
| Host Species | Rabbit |
| Purification | Peptide affinity purified. |
| Applications | WB |
| Immunogen Description | Synthetic peptide RDHMLVLEHYVNAAGITC linked to KLH. |
| Conjugates | Unconjugated |
| Formulation | 1*PBS (pH7.4), 0.2% BSA, 50% Glycerol. Preservative: 0.05% Sodium Azide. |
| Storage | Store at +4°C after thawing. Aliquot store at -20°C. Avoid repeated freeze / thaw cycles. |

Application Details

WB: 1:1,000

Images



Western blot analysis of GFP11-tag on fusion protein using anti-GFP11-tag antibody at 1/1,000 dilution.

Background

Tagging proteins with a functional sequence is a powerful way to access function, and inserting tags at endogenous genomic loci allows the preservation of a near-native cellular background. GFP11 is the 11th beta-strand of the superfolder GFP beta-barrel structure. When expressed in the same cell, GFP11 and its complementary GFP fragment (GFP1-10) enable functional GFP tagging upon complementation. The key advantage of the GFP11 is its small size (16 aa): this allows commercial ssDNA oligomers to be used as HDR donors, circumventing any requirement for molecular cloning.

References

1. Leonetti MD et al. A scalable strategy for high-throughput GFP tagging of endogenous human proteins. Proc Natl Acad Sci USA 113(25):E3501-8 (2016).

Published Papers

el at., Enhancing mitochondrial proteolysis alleviates alpha-synuclein-mediated cellular toxicity. In NPJ Parkinsons Dis on 2024 Jun 21

by Xi Zhang, Linhao Ruan,et al..PMID:38906862, , (2024)

[PMID:38906862](#)

Note: This product is for in vitro research use only and is not intended for use in humans or animals.