

Integrin beta 1 Rabbit mAb

Catalog No: #48603

Package Size: #48603-1 50ul #48603-2 100ul

Orders: order@signalwayantibody.comSupport: tech@signalwayantibody.com

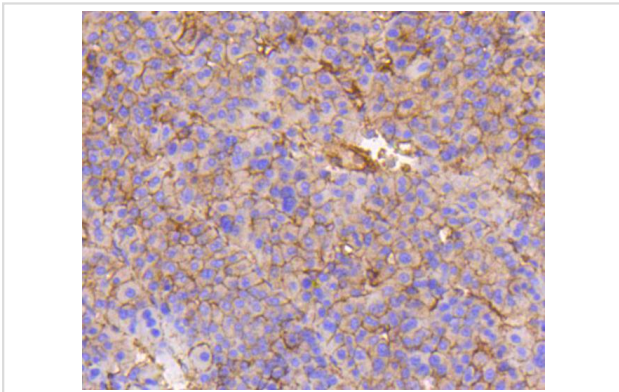
Description

Product Name	Integrin beta 1 Rabbit mAb
Host Species	Recombinant Rabbit
Clonality	Monoclonal antibody
Clone No.	SA40-08
Purification	ProA affinity purified
Applications	WB IHC ICC/IF
Species Reactivity	Human;Mouse;Rat;Zebrafish
Immunogen Description	recombinant protein
Conjugates	Unconjugated
Other Names	beta1 integrin antibody CD29 antibody Fibronectin receptor subunit beta antibody FNRB antibody Glycoprotein IIa antibody GP IIa antibody GPIIA antibody Integrin beta-1 antibody integrin VLA-4 beta subunit antibody Integrin, beta 1 (fibronectin receptor, beta polypeptide, antigen CD29 includes MDF2, MSK12) antibody ITB1_HUMAN antibody ITGB1 antibody MDF2 antibody MSK12 antibody OTTHUMP0000019420 antibody Very late activation protein, beta polypeptide antibody VLA BETA antibody VLA-4 subunit beta antibody VLA-BETA antibody VLAB antibody VLAbeta antibody
Accession No.	Swiss-Prot#:P05556
Calculated MW	88 kDa
SDS-PAGE MW	140 kDa
Formulation	1*TBS (pH7.4), 1%BSA, 40%Glycerol. Preservative: 0.05% Sodium Azide.
Storage	Store at -20°C

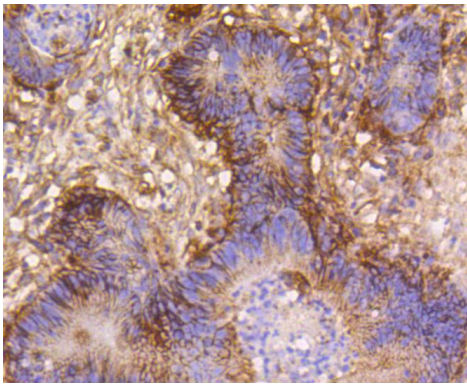
Application Details

WB: 1:1,000-5,000 IHC: 1:50-1:200

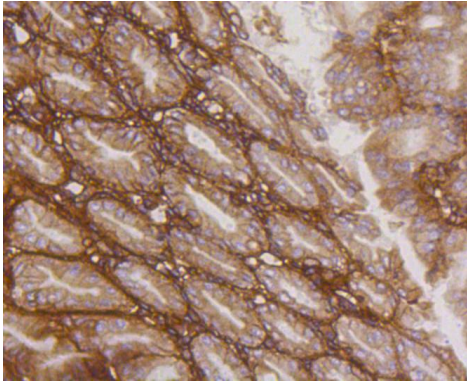
Images



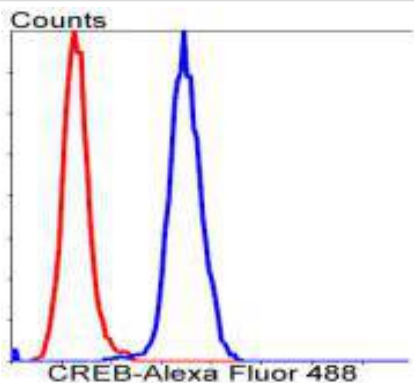
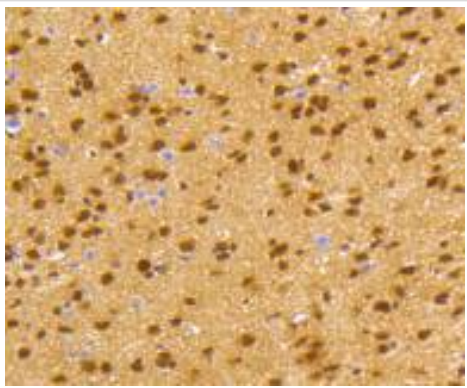
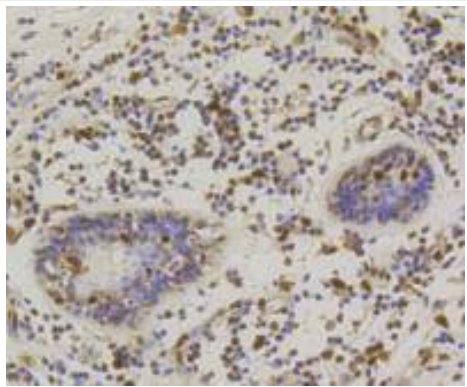
Immunohistochemical analysis of paraffin-embedded human liver cancer tissue using anti-Integrin beta 1 antibody. Counter stained with hematoxylin.

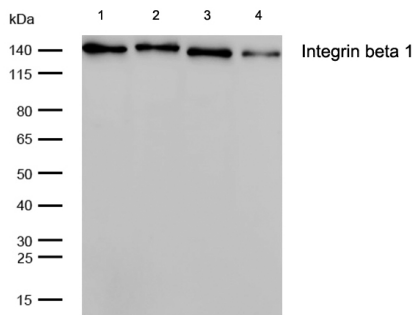


Immunohistochemical analysis of paraffin-embedded human colon cancer tissue using anti-Integrin beta 1 antibody. Counter stained with hematoxylin.

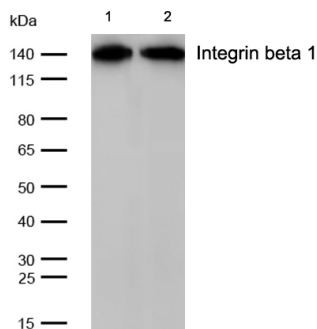


Immunohistochemical analysis of paraffin-embedded mouse stomach tissue using anti-Integrin beta 1 antibody. Counter stained with hematoxylin.

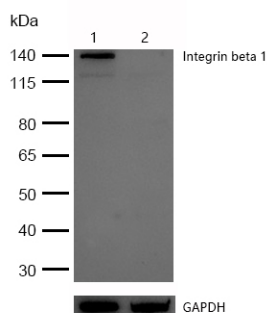




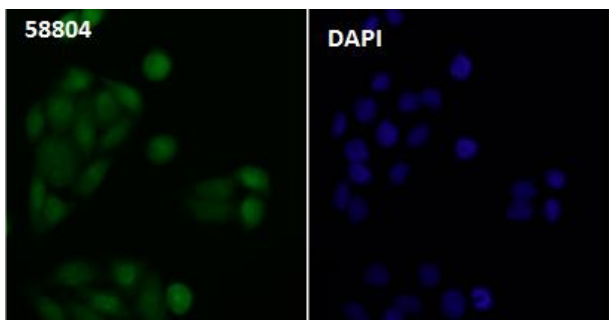
All lanes: Integrin beta 1 Rabbit mAb at 1/1k dilution
 Lane 1 : HeLa whole cell lysates
 Lane 2 : JK whole cell lysates
 Lane 3 : HepG2 whole cell lysates
 Lane 4 : MCF-7 whole cell lysates
 Lysates/proteins at 20 µg per lane.
 Secondary All lanes : Goat Anti-Rabbit IgG H&L (HRP) at 1/20000 dilution
 Predicted band size: 88 kDa
 Observed band size: 140 kDa
 Exposure time: 9 seconds



All lanes: Integrin beta 1 Rabbit mAb at 1/1k dilution
 Lane 1 : Mouse skin lysates
 Lane 2 : Rat skin lysates
 Lysates/proteins at 20 µg per lane.
 Secondary All lanes : Goat Anti-Rabbit IgG H&L (HRP) at 1/20000 dilution
 Predicted band size: 88 kDa
 Observed band size: 140 kDa
 Exposure time: 7 seconds



All lanes : Integrin beta 1 Rabbit mAb at 1/1k dilution
 Lane 1 : Wild-type HAP1 cell lysate
 Lane 2 : Integrin beta 1 knockdown HAP1 cell lysate
 Lysates/proteins at 20 µg per lane.



Immunocytochemistry/ Immunofluorescence Integrin beta 1 antibody (48603) ICC/IF staining of Integrin beta 1 in HeLa cells. Cells were fixed with 4% Paraformaldehyde permeabilized with 0.1% Triton X-100.

Samples were incubated with 48603 at a working dilution of 1/100. The secondary antibody was Alexa FluorB 488 goat anti rabbit, used at a dilution of 1/500.

Nuclei were counterstained with DAPI.

Background

Integrins are transmembrane receptors that mediate the attachment between a cell and its surroundings, such as other cells or the extracellular matrix (ECM). Integrins are obligate heterodimers containing two distinct chains, called the α (alpha) and β (beta) subunits. The molecular mass of the integrin subunits can vary from 90 kDa to 160 kDa. Beta subunits have four cysteine-rich repeated sequences. Both α and β subunits bind several divalent cations. Integrins have two main functions: Attachment of the cell to the ECM and signal transduction from the ECM to the cell. However, they are also involved in a wide range of other biological activities, including immune patrolling, cell migration, and binding to cells by certain viruses, such as adenovirus, echovirus, hantavirus, and foot and mouth disease viruses. Research studies have implicated $\beta 1$ integrin in various activities including embryonic development, blood vessel, skin, bone, and muscle formation, as well as tumor metastasis and angiogenesis.

References

1. "Glycoproteomics analysis of human liver tissue by combination of multiple enzyme digestion and hydrazide chemistry." Chen R. Jiang X. Sun D. Han G. Wang F., Ye M. Wang L. Zou H. J. Proteome Res. 8:651-661(2009).
2. "Osteoblast mineralization requires beta1 integrin/ICAP-1-dependent fibronectin deposition." Brunner M. Millon-Fremillon A. Chevalier G. Nakchbandi I.A. Mosher D. Block M.R. Albiges-Rizo C. Bouvard D. J. Cell Biol. 194:307-322(2011).

Note: This product is for in vitro research use only and is not intended for use in humans or animals.